



**ELECTRONIC COPY**

LG786628896  
Report verification at igi.org



April 4, 2026  
IGI Report Number **LG786628896**  
Description **LABORATORY GROWN DIAMOND**  
Shape and Cutting Style **ROUND BRILLIANT**  
Measurements **9.30 - 9.35 X 5.72 MM**  
**GRADING RESULTS**  
Carat Weight **3.05 CARATS**  
Color Grade **E**  
Clarity Grade **VS 1**  
Cut Grade **VERY GOOD**

April 4, 2026  
IGI Report Number **LG786628896**  
Description **LABORATORY GROWN DIAMOND**  
Shape and Cutting Style **ROUND BRILLIANT**  
Measurements **9.30 - 9.35 X 5.72 MM**

**GRADING RESULTS**

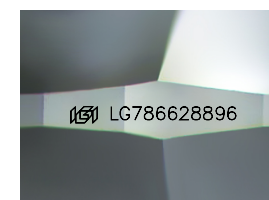
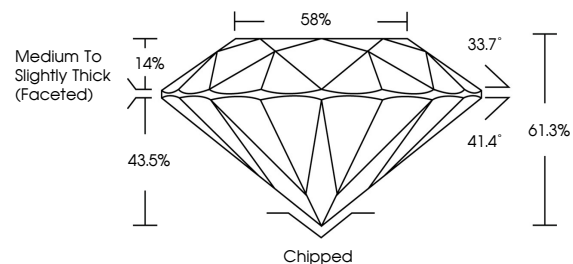
Carat Weight **3.05 CARATS**  
Color Grade **E**  
Clarity Grade **VS 1**  
Cut Grade **VERY GOOD**

**ADDITIONAL GRADING INFORMATION**

Polish **GOOD**  
Symmetry **EXCELLENT**  
Fluorescence **NONE**  
Inscription(s) **LG786628896**

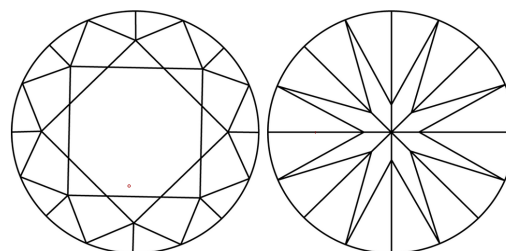
Comments: This Laboratory Grown Diamond was created by Chemical Vapor Deposition (CVD) growth process.  
Type IIa

**PROPORTIONS**



Sample Image Used

**CLARITY CHARACTERISTICS**



**KEY TO SYMBOLS**

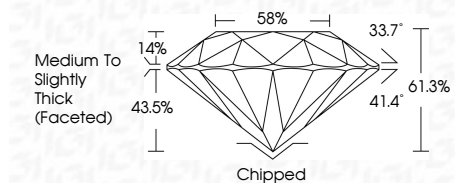
Red symbols indicate internal characteristics.  
Green symbols indicate external characteristics.

**COLOR**

D E F G H I J Faint Very Light Light

**CLARITY**

FL	IF	VS <sup>1-2</sup>	VS <sup>1-2</sup>	SI <sup>1-2</sup>	I <sup>1-3</sup>
Flawless	Internally Flawless	Very Very Slightly Included	Very Slightly Included	Slightly Included	Included



**ADDITIONAL GRADING INFORMATION**

Polish **GOOD**  
Symmetry **EXCELLENT**  
Fluorescence **NONE**  
Inscription(s) **LG786628896**  
Comments: This Laboratory Grown Diamond was created by Chemical Vapor Deposition (CVD) growth process.  
Type IIa



April 4, 2026  
IGI Report No **LG786628896**  
**ROUND BRILLIANT**  
9.30 - 9.35 X 5.72 MM  
3.05 CARATS  
E  
VERY GOOD  
VS 1  
61.3%  
58%  
Medium To Slightly Thick (Faceted)  
Chipped  
GOOD  
EXCELLENT  
NONE  
IGI LG786628896  
Comments: This Laboratory Grown Diamond was created by Chemical Vapor Deposition (CVD) growth process.  
Type IIa