



ELECTRONIC COPY

LG786629104
Report verification at igi.org



March 27, 2026
IGI Report Number **LG786629104**
Description **LABORATORY GROWN DIAMOND**
Shape and Cutting Style **SQUARE CUSHION MODIFIED BRILLIANT**

Measurements **13.31 X 13.00 X 6.94 MM**

GRADING RESULTS

Carat Weight **10.07 CARATS**
Color Grade **E**
Clarity Grade **VS 1**

March 27, 2026
IGI Report Number **LG786629104**
Description **LABORATORY GROWN DIAMOND**
Shape and Cutting Style **SQUARE CUSHION MODIFIED BRILLIANT**
Measurements **13.31 X 13.00 X 6.94 MM**

GRADING RESULTS

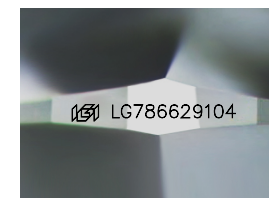
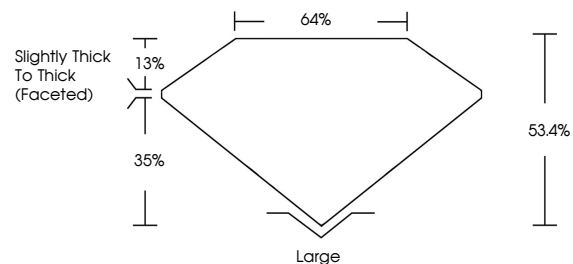
Carat Weight **10.07 CARATS**
Color Grade **E**
Clarity Grade **VS 1**

ADDITIONAL GRADING INFORMATION

Polish **EXCELLENT**
Symmetry **EXCELLENT**
Fluorescence **NONE**
Inscription(s) **IGI LG786629104**

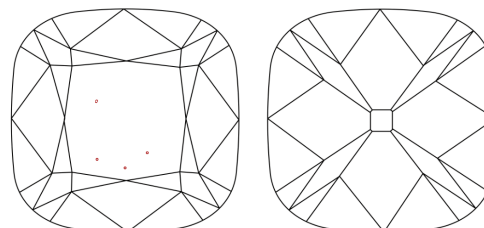
Comments: This Laboratory Grown Diamond was created by Chemical Vapor Deposition (CVD) growth process. Type IIa

PROPORTIONS



Sample Image Used

CLARITY CHARACTERISTICS



KEY TO SYMBOLS

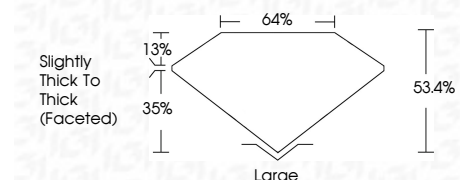
Red symbols indicate internal characteristics.
Green symbols indicate external characteristics.

COLOR

D E F G H I J Faint Very Light Light

CLARITY

FL	IF	VS ¹⁻²	VS ¹⁻²	SI ¹⁻²	I ¹⁻³
Flawless	Internally Flawless	Very Very Slightly Included	Very Slightly Included	Slightly Included	Included



ADDITIONAL GRADING INFORMATION

Polish **EXCELLENT**
Symmetry **EXCELLENT**
Fluorescence **NONE**
Inscription(s) **IGI LG786629104**
Comments: This Laboratory Grown Diamond was created by Chemical Vapor Deposition (CVD) growth process. Type IIa



March 27, 2026
IGI Report No **LG786629104**
SQUARE CUSHION MODIFIED BRILLIANT
13.31 X 13.00 X 6.94 MM
Carat Weight **10.07 CARATS**
Color Grade **E**
Clarity Grade **VS 1**
Table **64%**
Girdle **64%**
Culet **Slightly Thick To Thick (Faceted)**
Polish **Large**
Symmetry **EXCELLENT**
Fluorescence **EXCELLENT**
Inscription(s) **NONE**
IGI LG786629104
Comments: This Laboratory Grown Diamond was created by Chemical Vapor Deposition (CVD) growth process. Type IIa