



ELECTRONIC COPY

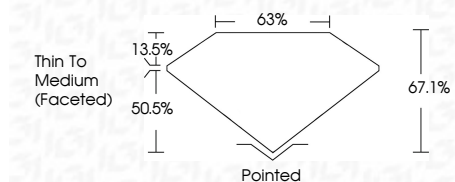
LG786645919
Report verification at igi.org



April 13, 2026
IGI Report Number **LG786645919**
Description **LABORATORY GROWN DIAMOND**
Shape and Cutting Style **CUSHION CUT**
Measurements **7.49 X 5.05 X 3.39 MM**

GRADING RESULTS

Carat Weight **1.07 CARAT**
Color Grade **E**
Clarity Grade **VVS 1**



ADDITIONAL GRADING INFORMATION

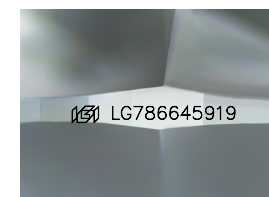
Polish **EXCELLENT**
Symmetry **EXCELLENT**
Fluorescence **NONE**
Inscription(s) **(IGI) LG786645919**
Comments: This Laboratory Grown Diamond was created by Chemical Vapor Deposition (CVD) growth process. Type IIa



IGI

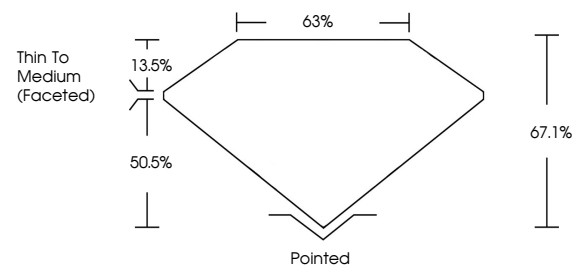
April 13, 2026
IGI Report No LG786645919
CUSHION CUT
1.07 CARAT
E
7.49 X 5.05 X 3.39 MM
Color Grade
VVS 1
Depth 67.1%
Table 63%
Thin To Medium (Faceted)
Pointed
EXCELLENT
EXCELLENT
NONE
(IGI) LG786645919

Comments: This Laboratory Grown Diamond was created by Chemical Vapor Deposition (CVD) growth process. Type IIa



Sample Image Used

PROPORTIONS



COLOR

D E F G H I J Faint Very Light Light

CLARITY

FL	IF	VVS ¹⁻²	VS ¹⁻²	SI ¹⁻²	I ¹⁻³
Flawless	Internally Flawless	Very Very Slightly Included	Very Slightly Included	Slightly Included	Included



April 13, 2026
IGI Report Number **LG786645919**
Description **LABORATORY GROWN DIAMOND**
Shape and Cutting Style **CUSHION CUT**
Measurements **7.49 X 5.05 X 3.39 MM**
GRADING RESULTS
Carat Weight **1.07 CARAT**
Color Grade **E**
Clarity Grade **VVS 1**
ADDITIONAL GRADING INFORMATION
Polish **EXCELLENT**
Symmetry **EXCELLENT**
Fluorescence **NONE**
Inscription(s) **(IGI) LG786645919**
Comments: This Laboratory Grown Diamond was created by Chemical Vapor Deposition (CVD) growth process. Type IIa