



**ELECTRONIC COPY**

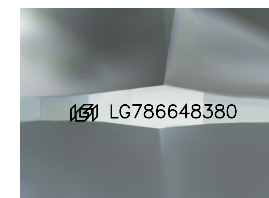
LG786648380  
Report verification at igi.org



April 1, 2026  
IGI Report Number **LG786648380**  
Description **LABORATORY GROWN DIAMOND**

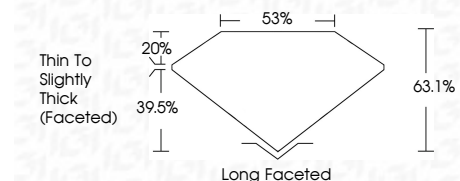
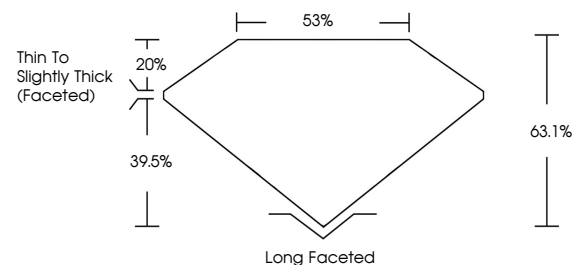
Shape and Cutting Style **ANTIQUÉ CUSHION CUT**  
Measurements **12.47 X 8.90 X 5.62 MM**

**GRADING RESULTS**  
Carat Weight **4.80 CARATS**  
Color Grade **F**  
Clarity Grade **VVS 2**

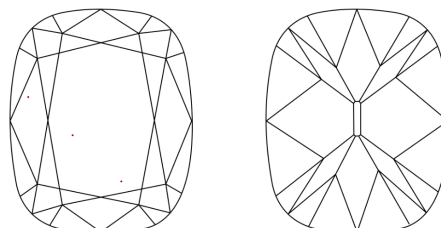


Sample Image Used

**PROPORTIONS**



**CLARITY CHARACTERISTICS**



**KEY TO SYMBOLS**

Red symbols indicate internal characteristics.  
Green symbols indicate external characteristics.

**COLOR**

D E F G H I J Faint Very Light Light

**CLARITY**

FL	IF	VVS <sup>1-2</sup>	VS <sup>1-2</sup>	SI <sup>1-2</sup>	I <sup>1-3</sup>
Flawless	Internally Flawless	Very Very Slightly Included	Very Slightly Included	Slightly Included	Included

**ADDITIONAL GRADING INFORMATION**

Polish **EXCELLENT**  
Symmetry **EXCELLENT**  
Fluorescence **NONE**  
Inscription(s) **IGI LG786648380**  
Comments: This Laboratory Grown Diamond was created by Chemical Vapor Deposition (CVD) growth process. Type IIa



April 1, 2026  
IGI Report No LG786648380  
**ANTIQUÉ CUSHION CUT**  
12.47 X 8.90 X 5.62 MM  
4.80 CARATS  
F  
4.80 CARATS  
VVS 2  
63.1%  
39.5%  
Thin To Slightly Thick (Faceted)  
Long Faceted  
EXCELLENT  
EXCELLENT  
NONE  
IGI LG786648380  
Comments: This Laboratory Grown Diamond was created by Chemical Vapor Deposition (CVD) growth process. Type IIa