



**ELECTRONIC COPY**

LG786648934  
Report verification at igi.org



March 28, 2026

IGI Report Number **LG786648934**

Description **LABORATORY GROWN DIAMOND**

Shape and Cutting Style **EMERALD CUT**

Measurements **9.66 X 6.61 X 4.79 MM**

**GRADING RESULTS**

Carat Weight **3.00 CARATS**

Color Grade **FANCY INTENSE PINK**

Clarity Grade **VS 1**

**LABORATORY GROWN DIAMOND REPORT**

March 28, 2026

IGI Report Number **LG786648934**

Description **LABORATORY GROWN DIAMOND**

Shape and Cutting Style **EMERALD CUT**

Measurements **9.66 X 6.61 X 4.79 MM**

**GRADING RESULTS**

Carat Weight **3.00 CARATS**

Color Grade **FANCY INTENSE PINK**

Clarity Grade **VS 1**

**ADDITIONAL GRADING INFORMATION**

Polish **EXCELLENT**

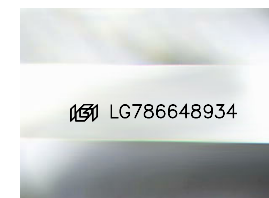
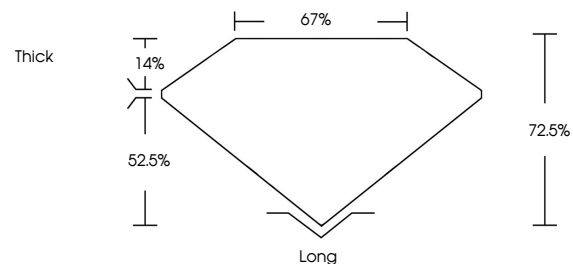
Symmetry **VERY GOOD**

Fluorescence **SLIGHT**

Inscription(s) **LG786648934**

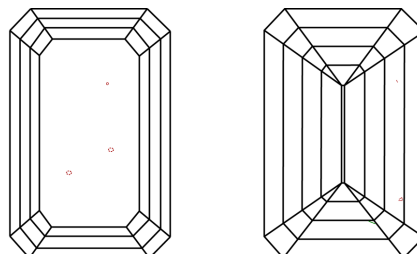
Comments: This Laboratory Grown Diamond was created by Chemical Vapor Deposition (CVD) growth process. Indications of post-growth treatment.

**PROPORTIONS**



Sample Image Used

**CLARITY CHARACTERISTICS**



**KEY TO SYMBOLS**

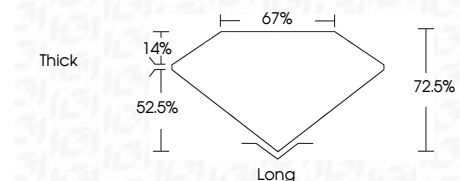
Red symbols indicate internal characteristics.  
Green symbols indicate external characteristics.

**COLOR**

D E F G H I J Faint Very Light Light

**CLARITY**

FL	IF	VS <sup>1-2</sup>	VS <sup>1-2</sup>	SI <sup>1-2</sup>	I <sup>1-3</sup>
Flawless	Internally Flawless	Very Very Slightly Included	Very Slightly Included	Slightly Included	Included



**ADDITIONAL GRADING INFORMATION**

Polish **EXCELLENT**

Symmetry **VERY GOOD**

Fluorescence **SLIGHT**

Inscription(s) **LG786648934**

Comments: This Laboratory Grown Diamond was created by Chemical Vapor Deposition (CVD) growth process. Indications of post-growth treatment.



March 28, 2026  
IGI Report No LG786648934  
**EMERALD CUT**

**3.00 CARATS**  
Carat Weight  
**FANCY INTENSE PINK**  
Color Grade

**VS 1**  
Clarity Grade

**9.66 X 6.61 X 4.79 MM**  
Depth  
**67%**  
Table  
**14%**  
Girdle  
**Thick**

**Long**  
Cutlet  
**EXCELLENT**  
Polish  
**VERY GOOD**  
Symmetry  
**SLIGHT**  
Fluorescence  
Inscription(s)  
 LG786648934

Comments: This Laboratory Grown Diamond was created by Chemical Vapor Deposition (CVD) growth process. Indications of post-growth treatment.