



**ELECTRONIC COPY**

LG786649785  
Report verification at [igi.org](http://igi.org)



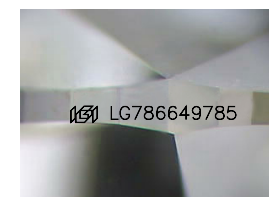
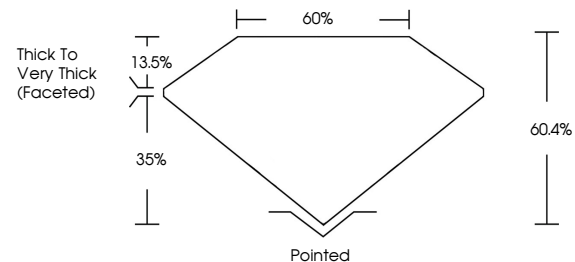
March 28, 2026  
IGI Report Number **LG786649785**  
Description **LABORATORY GROWN DIAMOND**  
Shape and Cutting Style **HEART MODIFIED BRILLIANT**  
Measurements **6.22 X 7.14 X 4.31 MM**

**GRADING RESULTS**

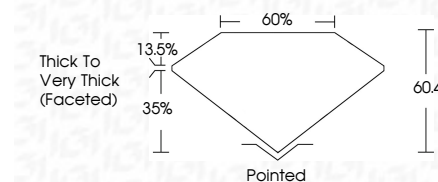
Carat Weight **1.51 CARAT**  
Color Grade **FANCY YELLOW**  
Clarity Grade **VS 2**

March 28, 2026  
IGI Report Number **LG786649785**  
Description **LABORATORY GROWN DIAMOND**  
Shape and Cutting Style **HEART MODIFIED BRILLIANT**  
Measurements **6.22 X 7.14 X 4.31 MM**  
**GRADING RESULTS**  
Carat Weight **1.51 CARAT**  
Color Grade **FANCY YELLOW**  
Clarity Grade **VS 2**

**PROPORTIONS**



Sample Image Used



**ADDITIONAL GRADING INFORMATION**

Polish **EXCELLENT**  
Symmetry **EXCELLENT**  
Fluorescence **NONE**  
Inscription(s) **IGI LG786649785**

Comments: This Laboratory Grown Diamond was created by Chemical Vapor Deposition (CVD) growth process.

**ADDITIONAL GRADING INFORMATION**

Polish **EXCELLENT**  
Symmetry **EXCELLENT**  
Fluorescence **NONE**  
Inscription(s) **IGI LG786649785**

Comments: This Laboratory Grown Diamond was created by Chemical Vapor Deposition (CVD) growth process.

**COLOR**

D E F G H I J Faint Very Light Light

**CLARITY**

FL	IF	VS <sup>1-2</sup>	VS <sup>1-2</sup>	SI <sup>1-2</sup>	I <sup>1-3</sup>
Flawless	Internally Flawless	Very Very Slightly Included	Very Slightly Included	Slightly Included	Included



**IGI**



March 28, 2026  
IGI Report No **LG786649785**  
**HEART MODIFIED BRILLIANT**  
**6.22 X 7.14 X 4.31 MM**  
Carat Weight **1.51 CARAT**  
Color Grade **FANCY YELLOW**  
Clarity Grade **VS 2**  
Depth **60.4%**  
Table **60%**  
Girdle **Thick to Very Thick (Faceted)**  
Culet **Pointed**  
Polish **EXCELLENT**  
Symmetry **EXCELLENT**  
Fluorescence **NONE**  
Inscription(s) **IGI LG786649785**  
Comments: This Laboratory Grown Diamond was created by Chemical Vapor Deposition (CVD) growth process.