



April 7, 2026

IGI Report Number **LG786657247**

PEAR BRILLIANT

LABORATORY GROWN DIAMOND

6.54 X 4.20 X 2.68 MM

Carat Weight	0.42 CARAT
Color Grade	D
Clarity Grade	I.F.
Polish	EXCELLENT
Symmetry	EXCELLENT
Fluorescence	NONE
Inscription(s)	IGI LG786657247

Comments: As Grown - No indication of post-growth treatment. This Laboratory Grown Diamond was created by High Pressure High Temperature (HPHT) growth process. Type II

LABORATORY GROWN DIAMOND REPORT

April 7, 2026
IGI Report Number **LG786657247**
Description **LABORATORY GROWN DIAMOND**
Shape and Cutting Style **PEAR BRILLIANT**
Measurements **6.54 X 4.20 X 2.68 MM**

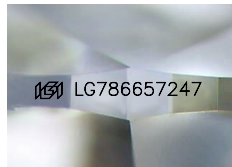
GRADING RESULTS

Carat Weight **0.42 CARAT**
Color Grade **D**
Clarity Grade **INTERNALLY FLAWLESS**

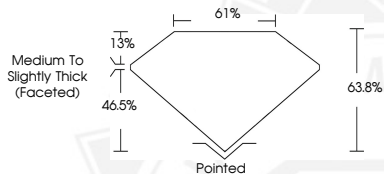
ADDITIONAL GRADING INFORMATION

Polish **EXCELLENT**
Symmetry **EXCELLENT**
Fluorescence **NONE**
Inscription(s) **IGI LG786657247**

Comments: As Grown - No indication of post-growth treatment. This Laboratory Grown Diamond was created by High Pressure High Temperature (HPHT) growth process. Type II



Sample Image Used



April 7, 2026

IGI Report Number **LG786657247**

PEAR BRILLIANT

LABORATORY GROWN DIAMOND

6.54 X 4.20 X 2.68 MM

Carat Weight	0.42 CARAT
Color Grade	D
Clarity Grade	I.F.
Polish	EXCELLENT
Symmetry	EXCELLENT
Fluorescence	NONE
Inscription(s)	IGI LG786657247

Comments: As Grown - No indication of post-growth treatment. This Laboratory Grown Diamond was created by High Pressure High Temperature (HPHT) growth process. Type II



THIS DOCUMENT WAS PRODUCED WITH THE FOLLOWING SECURITY MEASURES: SPECIAL DOCUMENT PAPER, INK SCREENS, WATERMARK, BACKGROUND DESIGNS, HOLOGRAM AND OTHER SECURITY FEATURES NOT LISTED AND DO EXCEED DOCUMENT SECURITY INDUSTRY GUIDELINES.