



**ELECTRONIC COPY**

LG786658267  
Report verification at igi.org



March 27, 2026

IGI Report Number **LG786658267**

Description **LABORATORY GROWN DIAMOND**

Shape and Cutting Style **EMERALD CUT**

Measurements **11.03 X 7.23 X 4.86 MM**

**GRADING RESULTS**

Carat Weight **4.03 CARATS**

Color Grade **E**

Clarity Grade **INTERNALLY FLAWLESS**

**LABORATORY GROWN DIAMOND REPORT**

March 27, 2026

IGI Report Number **LG786658267**

Description **LABORATORY GROWN DIAMOND**

Shape and Cutting Style **EMERALD CUT**

Measurements **11.03 X 7.23 X 4.86 MM**

**GRADING RESULTS**

Carat Weight **4.03 CARATS**

Color Grade **E**

Clarity Grade **INTERNALLY FLAWLESS**

**ADDITIONAL GRADING INFORMATION**

Polish **EXCELLENT**

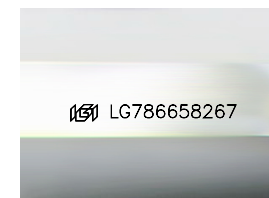
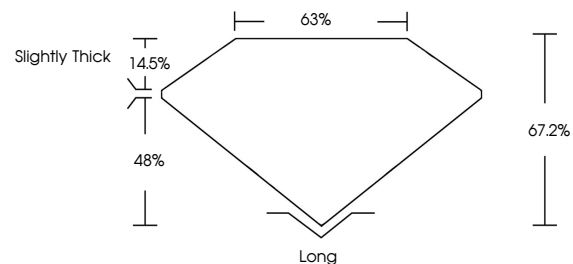
Symmetry **EXCELLENT**

Fluorescence **NONE**

Inscription(s) **IGI LG786658267**

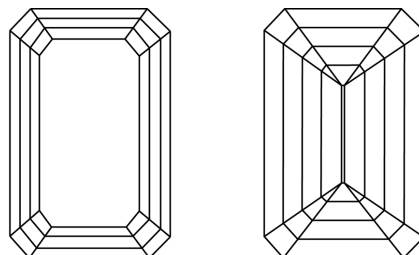
Comments: This Laboratory Grown Diamond was created by Chemical Vapor Deposition (CVD) growth process. Type IIa

**PROPORTIONS**



Sample Image Used

**CLARITY CHARACTERISTICS**



**KEY TO SYMBOLS**

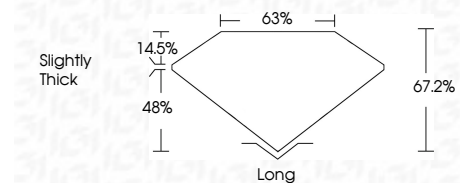
Red symbols indicate internal characteristics.  
Green symbols indicate external characteristics.

**COLOR**

D E F G H I J Faint Very Light Light

**CLARITY**

FL	IF	VS <sup>1-2</sup>	VS <sup>1-2</sup>	SI <sup>1-2</sup>	I <sup>1-3</sup>
Flawless	Internally Flawless	Very Very Slightly Included	Very Slightly Included	Slightly Included	Included



**ADDITIONAL GRADING INFORMATION**

Polish **EXCELLENT**

Symmetry **EXCELLENT**

Fluorescence **NONE**

Inscription(s) **IGI LG786658267**

Comments: This Laboratory Grown Diamond was created by Chemical Vapor Deposition (CVD) growth process. Type IIa



**IGI**



March 27, 2026  
IGI Report No LG786658267  
EMERALD CUT

4.03 CARATS  
E  
4.03 CARATS

11.03 X 7.23 X 4.86 MM  
Color Grade E  
Clarity Grade IF  
Depth 48%  
Table 14.5%  
Girdle Slightly Thick

Long  
EXCELLENT  
EXCELLENT  
NONE  
IGI LG786658267

Comments: This Laboratory Grown Diamond was created by Chemical Vapor Deposition (CVD) growth process. Type IIa