



ELECTRONIC COPY

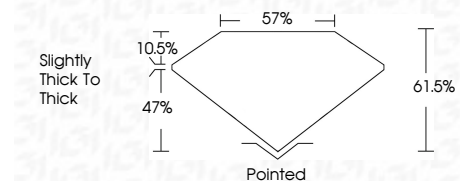
LG786661098
Report verification at igi.org



April 2, 2026
IGI Report Number **LG786661098**
Description **LABORATORY GROWN DIAMOND**
Shape and Cutting Style **CUT CORNERED
RECTANGULAR MODIFIED
BRILLIANT**
Measurements **13.14 X 8.47 X 5.21 MM**

GRADING RESULTS

Carat Weight **5.03 CARATS**
Color Grade **FANCY VIVID PINK**
Clarity Grade **VS 2**



ADDITIONAL GRADING INFORMATION

Polish **EXCELLENT**
Symmetry **EXCELLENT**
Fluorescence **SLIGHT**
Inscription(s) **IGI LG786661098**
Comments: This Laboratory Grown Diamond was created by Chemical Vapor Deposition (CVD) growth process. Indications of post-growth treatment.



April 2, 2026
IGI Report No LG786661098
CUT CORNERED RECT. MODIFIED BRILLIANT
13.14 X 8.47 X 5.21 MM
5.03 CARATS
FANCY VIVID PINK
VS 2
61.5%
47%
Slightly thick to thick
Pointed
EXCELLENT
EXCELLENT
SLIGHT
IGI LG786661098
Comments: This Laboratory Grown Diamond was created by Chemical Vapor Deposition (CVD) growth process. Indications of post-growth treatment.

LABORATORY GROWN DIAMOND REPORT

April 2, 2026
IGI Report Number **LG786661098**
Description **LABORATORY GROWN DIAMOND**
Shape and Cutting Style **CUT CORNERED RECTANGULAR
MODIFIED BRILLIANT**
Measurements **13.14 X 8.47 X 5.21 MM**

GRADING RESULTS

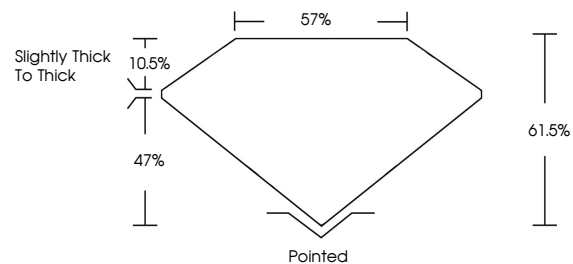
Carat Weight **5.03 CARATS**
Color Grade **FANCY VIVID PINK**
Clarity Grade **VS 2**

ADDITIONAL GRADING INFORMATION

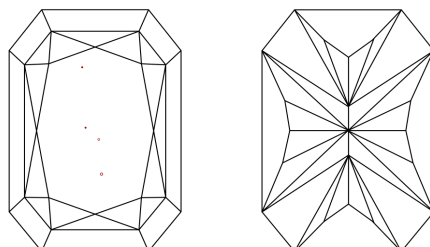
Polish **EXCELLENT**
Symmetry **EXCELLENT**
Fluorescence **SLIGHT**
Inscription(s) **IGI LG786661098**

Comments: This Laboratory Grown Diamond was created by Chemical Vapor Deposition (CVD) growth process. Indications of post-growth treatment.

PROPORTIONS

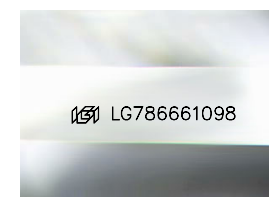


CLARITY CHARACTERISTICS



KEY TO SYMBOLS

Red symbols indicate internal characteristics.
Green symbols indicate external characteristics.



Sample Image Used

COLOR

D E F G H I J Faint Very Light Light

CLARITY

FL	IF	VS ¹⁻²	VS ¹⁻²	SI ¹⁻²	I ¹⁻³
Flawless	Internally Flawless	Very Very Slightly Included	Very Slightly Included	Slightly Included	Included

