



ELECTRONIC COPY

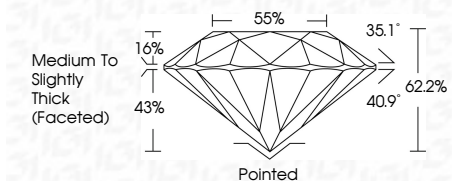
LG786669551
Report verification at igi.org



March 26, 2026
IGI Report Number **LG786669551**
Description **LABORATORY GROWN DIAMOND**
Shape and Cutting Style **ROUND BRILLIANT**
Measurements **7.17 - 7.22 X 4.47 MM**

GRADING RESULTS

Carat Weight **1.40 CARAT**
Color Grade **E**
Clarity Grade **VS 1**
Cut Grade **IDEAL**



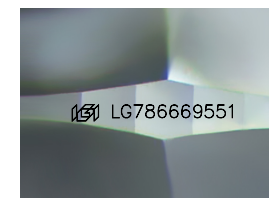
ADDITIONAL GRADING INFORMATION

Polish **EXCELLENT**
Symmetry **EXCELLENT**
Fluorescence **NONE**
Inscription(s) **IGI LG786669551**
Comments: This Laboratory Grown Diamond was created by Chemical Vapor Deposition (CVD) growth process. Type IIa



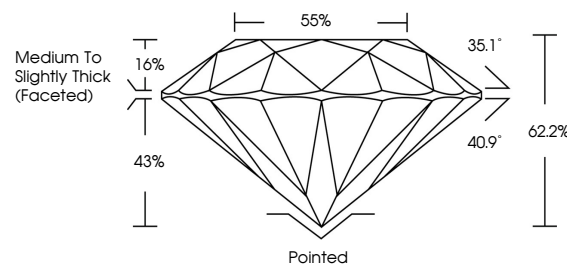
IGI

March 26, 2026
IGI Report No LG786669551
ROUND BRILLIANT
7.17 - 7.22 X 4.47 MM
1.40 CARAT
Color Grade **E**
Clarity Grade **VS 1**
Cut Grade **IDEAL**
Depth **62.2%**
Table **55%**
Crown Thickness (Faceted) **1.6%**
Pavilion Thickness (Faceted) **43%**
Culet **Pointed**
Polish **EXCELLENT**
Symmetry **EXCELLENT**
Fluorescence **NONE**
Inscription(s) **IGI LG786669551**
Comments: This Laboratory Grown Diamond was created by Chemical Vapor Deposition (CVD) growth process. Type IIa

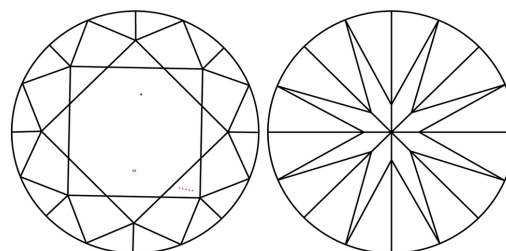


Sample Image Used

PROPORTIONS



CLARITY CHARACTERISTICS



KEY TO SYMBOLS

Red symbols indicate internal characteristics.
Green symbols indicate external characteristics.

COLOR

D E F G H I J Faint Very Light Light

CLARITY

FL	IF	VS ¹⁻²	VS ¹⁻²	SI ¹⁻²	I ¹⁻³
Flawless	Internally Flawless	Very Very Slightly Included	Very Slightly Included	Slightly Included	Included

