



LABORATORY GROWN DIAMOND REPORT

March 27, 2026
 IGI Report Number **LG786682554**
 Description **LABORATORY GROWN DIAMOND**
 Shape and Cutting Style **PEAR BRILLIANT**
 Measurements **7.55 X 5.06 X 3.23 MM**

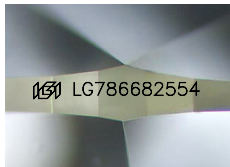
GRADING RESULTS

Carat Weight **0.73 CARAT**
 Color Grade **F**
 Clarity Grade **VS 2**

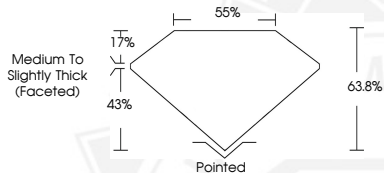
ADDITIONAL GRADING INFORMATION

Polish **VERY GOOD**
 Symmetry **VERY GOOD**
 Fluorescence **NONE**
 Inscription(s) **IGI LG786682554**

Comments: This Laboratory Grown Diamond was created by Chemical Vapor Deposition (CVD) growth process. Type IIa



Sample Image Used



March 27, 2026
 IGI Report Number **LG786682554**
PEAR BRILLIANT
LABORATORY GROWN DIAMOND
7.55 X 5.06 X 3.23 MM
 Carat Weight **0.73 CARAT**
 Color Grade **F**
 Clarity Grade **VS 2**
 Polish **VERY GOOD**
 Symmetry **VERY GOOD**
 Fluorescence **NONE**
 Inscription(s) **IGI LG786682554**

Comments: This Laboratory Grown Diamond was created by Chemical Vapor Deposition (CVD) growth process. Type IIa



March 27, 2026
 IGI Report Number **LG786682554**
PEAR BRILLIANT
LABORATORY GROWN DIAMOND
7.55 X 5.06 X 3.23 MM
 Carat Weight **0.73 CARAT**
 Color Grade **F**
 Clarity Grade **VS 2**
 Polish **VERY GOOD**
 Symmetry **VERY GOOD**
 Fluorescence **NONE**
 Inscription(s) **IGI LG786682554**

Comments: This Laboratory Grown Diamond was created by Chemical Vapor Deposition (CVD) growth process. Type IIa



THIS DOCUMENT WAS PRODUCED WITH THE FOLLOWING SECURITY MEASURES: SPECIAL DOCUMENT PAPER, INK SCREENS, WATERMARK, BACKGROUND DESIGNS, HOLOGRAM AND OTHER SECURITY FEATURES NOT LISTED AND DO EXCEED DOCUMENT SECURITY INDUSTRY GUIDELINES.