



ELECTRONIC COPY

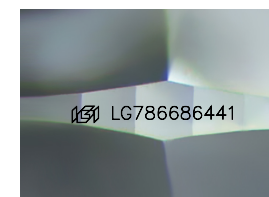
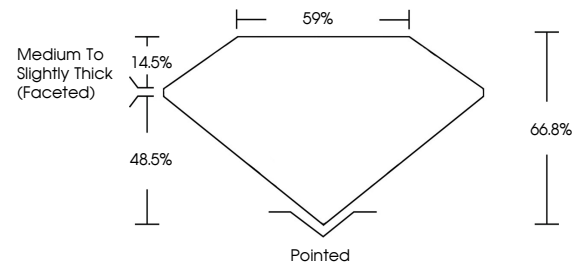
LG786686441
Report verification at igi.org



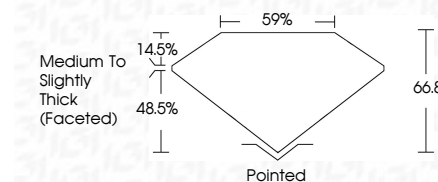
March 27, 2026
IGI Report Number **LG786686441**
Description **LABORATORY GROWN DIAMOND**
Shape and Cutting Style **CUSHION MODIFIED BRILLIANT**
Measurements **9.72 X 7.44 X 4.97 MM**
GRADING RESULTS
Carat Weight **2.77 CARATS**
Color Grade **D**
Clarity Grade **VVS 2**

March 27, 2026
IGI Report Number **LG786686441**
Description **LABORATORY GROWN DIAMOND**
Shape and Cutting Style **CUSHION MODIFIED BRILLIANT**
Measurements **9.72 X 7.44 X 4.97 MM**
GRADING RESULTS
Carat Weight **2.77 CARATS**
Color Grade **D**
Clarity Grade **VVS 2**

PROPORTIONS



Sample Image Used



ADDITIONAL GRADING INFORMATION

Polish **EXCELLENT**
Symmetry **EXCELLENT**
Fluorescence **NONE**
Inscription(s) **IGI LG786686441**

Comments: This Laboratory Grown Diamond was created by Chemical Vapor Deposition (CVD) growth process. Type IIa

ADDITIONAL GRADING INFORMATION

Polish **EXCELLENT**
Symmetry **EXCELLENT**
Fluorescence **NONE**
Inscription(s) **IGI LG786686441**
Comments: This Laboratory Grown Diamond was created by Chemical Vapor Deposition (CVD) growth process. Type IIa

COLOR

D E F G H I J Faint Very Light Light

CLARITY

FL	IF	VVS ¹⁻²	VS ¹⁻²	SI ¹⁻²	I ¹⁻³
Flawless	Internally Flawless	Very Very Slightly Included	Very Slightly Included	Slightly Included	Included



IGI



March 27, 2026
IGI Report No **LG786686441**
CUSHION MODIFIED BRILLIANT
9.72 X 7.44 X 4.97 MM
2.77 CARATS
D
2.77 CARATS
D
VVS 2
66.8%
59%
Medium to Slightly Thick (Faceted)
Pointed
EXCELLENT
EXCELLENT
NONE
IGI LG786686441

Comments: This Laboratory Grown Diamond was created by Chemical Vapor Deposition (CVD) growth process. Type IIa