



ELECTRONIC COPY

LG787603762 Report verification at igi.org



April 3, 2026 IGI Report Number LG787603762 Description LABORATORY GROWN DIAMOND Shape and Cutting Style CUSHION MODIFIED BRILLIANT Measurements 9.79 X 7.42 X 4.91 MM GRADING RESULTS Carat Weight 2.85 CARATS Color Grade D Clarity Grade VS 1

April 3, 2026 IGI Report Number LG787603762 Description LABORATORY GROWN DIAMOND Shape and Cutting Style CUSHION MODIFIED BRILLIANT Measurements 9.79 X 7.42 X 4.91 MM

GRADING RESULTS

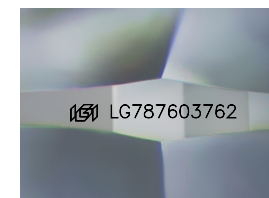
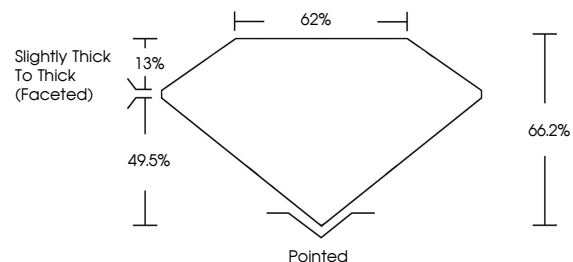
Carat Weight 2.85 CARATS Color Grade D Clarity Grade VS 1

ADDITIONAL GRADING INFORMATION

Polish EXCELLENT Symmetry EXCELLENT Fluorescence NONE Inscription(s) IGI LG787603762

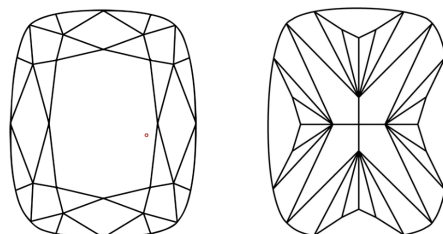
Comments: This Laboratory Grown Diamond was created by Chemical Vapor Deposition (CVD) growth process. Type IIa

PROPORTIONS



Sample Image Used

CLARITY CHARACTERISTICS



KEY TO SYMBOLS

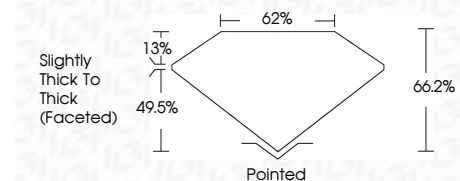
Red symbols indicate internal characteristics. Green symbols indicate external characteristics.

COLOR

D E F G H I J Faint Very Light Light

CLARITY

FL IF VS 1-2 VS 2-3 SI 1-2 I 1-3 Flawless Internally Flawless Very Very Slightly Included Very Slightly Included Slightly Included Included



ADDITIONAL GRADING INFORMATION

Polish EXCELLENT Symmetry EXCELLENT Fluorescence NONE Inscription(s) IGI LG787603762 Comments: This Laboratory Grown Diamond was created by Chemical Vapor Deposition (CVD) growth process. Type IIa



April 3, 2026 IGI Report No LG787603762 CUSHION MODIFIED BRILLIANT 9.79 X 7.42 X 4.91 MM 2.85 CARATS D VS 1 66.2% 62% Slightly Thick To Thick (Faceted) Pointed EXCELLENT EXCELLENT NONE NONE IGI LG787603762 Comments: This Laboratory Grown Diamond was created by Chemical Vapor Deposition (CVD) growth process. Type IIa