



**ELECTRONIC COPY**

LG787611680  
Report verification at igi.org



March 31, 2026

IGI Report Number **LG787611680**

Description **LABORATORY GROWN DIAMOND**

Shape and Cutting Style **PRINCESS CUT**

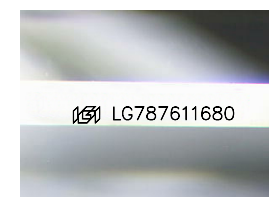
Measurements **6.90 X 6.75 X 4.92 MM**

**GRADING RESULTS**

Carat Weight **2.02 CARATS**

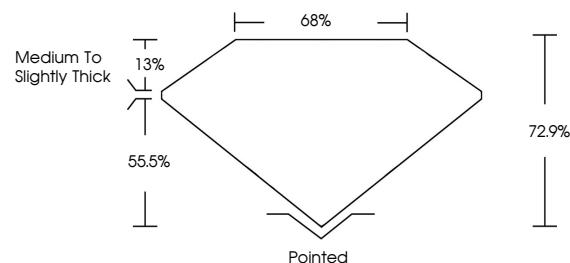
Color Grade **F**

Clarity Grade **VS 1**

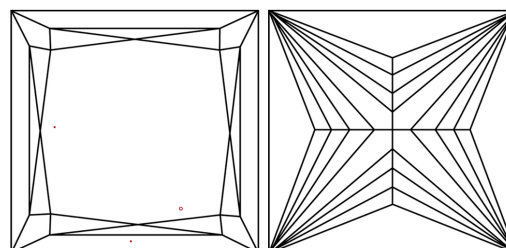


Sample Image Used

**PROPORTIONS**



**CLARITY CHARACTERISTICS**



**KEY TO SYMBOLS**

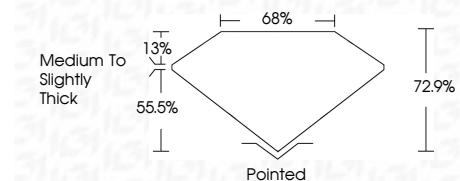
Red symbols indicate internal characteristics.  
Green symbols indicate external characteristics.

**COLOR**

D E F G H I J Faint Very Light Light

**CLARITY**

FL	IF	VS <sup>1-2</sup>	VS <sup>1-2</sup>	SI <sup>1-2</sup>	I <sup>1-3</sup>
Flawless	Internally Flawless	Very Very Slightly Included	Very Slightly Included	Slightly Included	Included



**ADDITIONAL GRADING INFORMATION**

Polish **EXCELLENT**

Symmetry **EXCELLENT**

Fluorescence **NONE**

Inscription(s) **IGI LG787611680**

Comments: This Laboratory Grown Diamond was created by Chemical Vapor Deposition (CVD) growth process. Type IIa



**IGI**



March 31, 2026  
IGI Report No LG787611680  
**PRINCESS CUT**

**2.02 CARATS**  
F

6.90 X 6.75 X 4.92 MM  
Color Grade  
Clarity Grade  
Table  
Depth  
Girdle  
Medium to Slightly Thick

VS 1  
72.9%  
65%

Pointed  
EXCELLENT  
EXCELLENT  
NONE  
IGI LG787611680

Comments: This Laboratory Grown Diamond was created by Chemical Vapor Deposition (CVD) growth process. Type IIa