



ELECTRONIC COPY

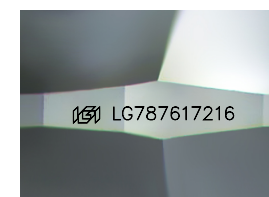
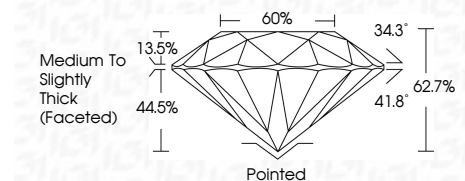
LG787617216
Report verification at igi.org



April 10, 2026
IGI Report Number LG787617216
Description LABORATORY GROWN DIAMOND
Shape and Cutting Style ROUND BRILLIANT
Measurements 6.36 - 6.40 X 4.00 MM

GRADING RESULTS

Carat Weight 1.01 CARAT
Color Grade G
Clarity Grade VVS 2
Cut Grade EXCELLENT



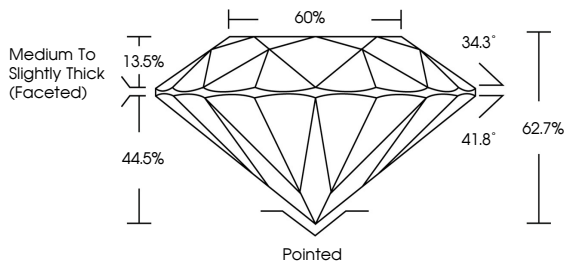
Sample Image Used

ADDITIONAL GRADING INFORMATION

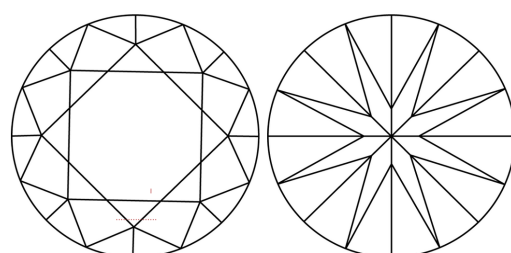
Polish VERY GOOD
Symmetry EXCELLENT
Fluorescence NONE
Inscription(s) IGI LG787617216
Comments: This Laboratory Grown Diamond was created by Chemical Vapor Deposition (CVD) growth process. Type IIa



PROPORTIONS



CLARITY CHARACTERISTICS



KEY TO SYMBOLS

Red symbols indicate internal characteristics.
Green symbols indicate external characteristics.

COLOR

Table with color grades: D, E, F, G, H, I, J, Faint, Very Light, Light

CLARITY

Table with clarity grades: FL, IF, VVS 1-2, VS 1-2, SI 1-2, I 1-3, Flawless, Internally Flawless, Very Very Slightly Included, Very Slightly Included, Slightly Included, Included



Summary of report details including date, report number, description, measurements, grading results, and additional information.