



ELECTRONIC COPY

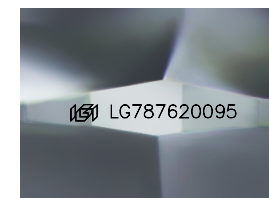
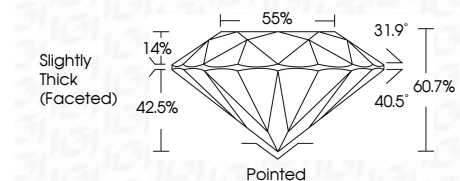
LG787620095
Report verification at igi.org



April 24, 2026
IGI Report Number LG787620095
Description LABORATORY GROWN DIAMOND
Shape and Cutting Style ROUND BRILLIANT
Measurements 6.42 - 6.47 X 3.91 MM

GRADING RESULTS

Carat Weight 1.00 CARAT
Color Grade D
Clarity Grade VS 1
Cut Grade EXCELLENT



Sample Image Used

ADDITIONAL GRADING INFORMATION

Polish EXCELLENT
Symmetry EXCELLENT
Fluorescence NONE
Inscription(s) LG787620095
Comments: As Grown - No indication of post-growth treatment.
This Laboratory Grown Diamond was created by High Pressure High Temperature (HPHT) growth process.
Type II



April 24, 2026
IGI Report No LG787620095
ROUND BRILLIANT
6.42 - 6.47 X 3.91 MM
1.00 CARAT
D
EXCELLENT
VS 1
60.7%
85%
Slightly Thick (Faceted)
Pointed
EXCELLENT
EXCELLENT
NONE
None
IGI LG787620095
Comments: As Grown - No indication of post-growth treatment. This Laboratory Grown Diamond was created by High Pressure High Temperature (HPHT) growth process. Type II

April 24, 2026
IGI Report Number LG787620095
Description LABORATORY GROWN DIAMOND
Shape and Cutting Style ROUND BRILLIANT
Measurements 6.42 - 6.47 X 3.91 MM

GRADING RESULTS

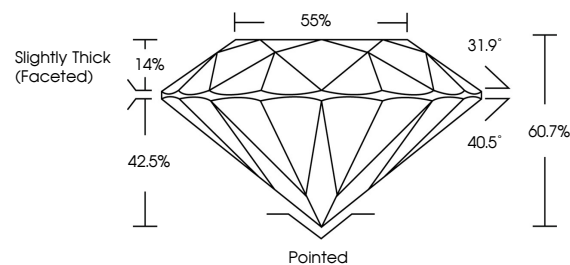
Carat Weight 1.00 CARAT
Color Grade D
Clarity Grade VS 1
Cut Grade EXCELLENT

ADDITIONAL GRADING INFORMATION

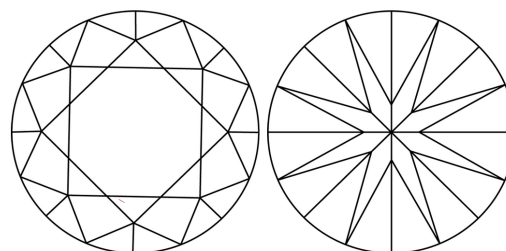
Polish EXCELLENT
Symmetry EXCELLENT
Fluorescence NONE
Inscription(s) LG787620095

Comments: As Grown - No indication of post-growth treatment.
This Laboratory Grown Diamond was created by High Pressure High Temperature (HPHT) growth process.
Type II

PROPORTIONS



CLARITY CHARACTERISTICS



KEY TO SYMBOLS

Red symbols indicate internal characteristics.
Green symbols indicate external characteristics.

COLOR

D E F G H I J Faint Very Light Light

CLARITY

FL IF VS 1-2 VS 2-3 SI 1-2 I 1-3
Flawless Internally Flawless Very Very Slightly Very Slightly Slightly Included Included