



ELECTRONIC COPY

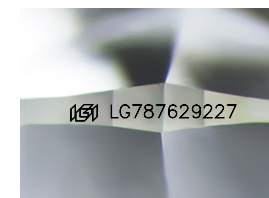
LG787629227
Report verification at igi.org



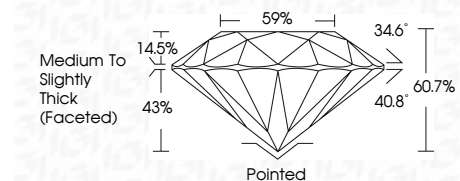
April 6, 2026
IGI Report Number **LG787629227**
Description **LABORATORY GROWN DIAMOND**
Shape and Cutting Style **ROUND BRILLIANT**
Measurements **6.50 - 6.56 X 3.96 MM**

GRADING RESULTS

Carat Weight **1.03 CARAT**
Color Grade **E**
Clarity Grade **VS 2**
Cut Grade **IDEAL**



Sample Image Used



ADDITIONAL GRADING INFORMATION

Polish **VERY GOOD**
Symmetry **VERY GOOD**
Fluorescence **NONE**
Inscription(s) **IGI LG787629227**
Comments: This Laboratory Grown Diamond was created by Chemical Vapor Deposition (CVD) growth process. Type IIa



April 6, 2026
IGI Report No LG787629227
ROUND BRILLIANT
6.50 - 6.56 X 3.96 MM
1.03 CARAT
E
VS 2
IDEAL
60.7%
59%
Medium To Slightly Thick (Faceted)
Pointed
VERY GOOD
VERY GOOD
VERY GOOD
NONE
IGI LG787629227
Comments: This Laboratory Grown Diamond was created by Chemical Vapor Deposition (CVD) growth process. Type IIa

LABORATORY GROWN DIAMOND REPORT

April 6, 2026
IGI Report Number **LG787629227**
Description **LABORATORY GROWN DIAMOND**
Shape and Cutting Style **ROUND BRILLIANT**
Measurements **6.50 - 6.56 X 3.96 MM**

GRADING RESULTS

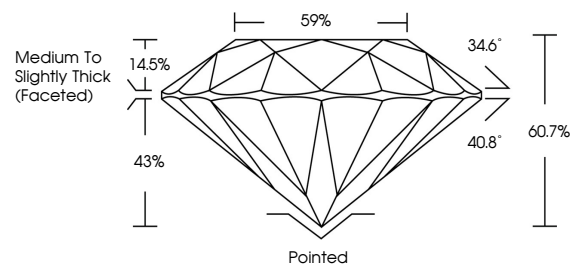
Carat Weight **1.03 CARAT**
Color Grade **E**
Clarity Grade **VS 2**
Cut Grade **IDEAL**

ADDITIONAL GRADING INFORMATION

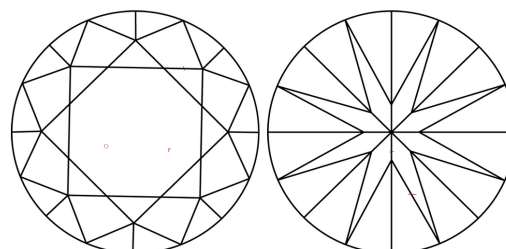
Polish **VERY GOOD**
Symmetry **VERY GOOD**
Fluorescence **NONE**
Inscription(s) **IGI LG787629227**

Comments: This Laboratory Grown Diamond was created by Chemical Vapor Deposition (CVD) growth process. Type IIa

PROPORTIONS



CLARITY CHARACTERISTICS



KEY TO SYMBOLS

Red symbols indicate internal characteristics.
Green symbols indicate external characteristics.

COLOR

D E F G H I J Faint Very Light Light

CLARITY

FL	IF	VS ¹⁻²	VS ¹⁻²	SI ¹⁻²	I ¹⁻³
Flawless	Internally Flawless	Very Very Slightly Included	Very Slightly Included	Slightly Included	Included

