



ELECTRONIC COPY

LG787633304
Report verification at igi.org



April 2, 2026

IGI Report Number **LG787633304**

Description **LABORATORY GROWN DIAMOND**

Shape and Cutting Style **PEAR BRILLIANT**

Measurements **16.91 X 10.85 X 6.66 MM**

GRADING RESULTS

Carat Weight **7.17 CARATS**

Color Grade **E**

Clarity Grade **VVS 2**

April 2, 2026
IGI Report Number **LG787633304**
Description **LABORATORY GROWN DIAMOND**
Shape and Cutting Style **PEAR BRILLIANT**
Measurements **16.91 X 10.85 X 6.66 MM**

GRADING RESULTS

Carat Weight **7.17 CARATS**

Color Grade **E**

Clarity Grade **VVS 2**

ADDITIONAL GRADING INFORMATION

Polish **EXCELLENT**

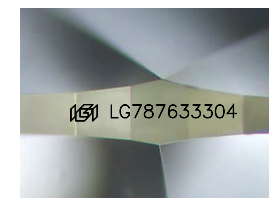
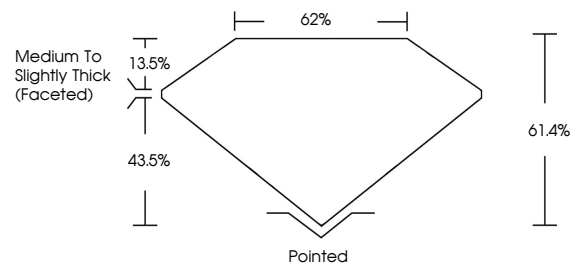
Symmetry **EXCELLENT**

Fluorescence **NONE**

Inscription(s) **LG787633304**

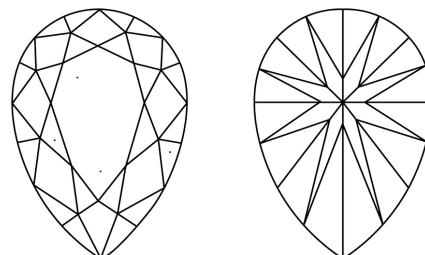
Comments: This Laboratory Grown Diamond was created by Chemical Vapor Deposition (CVD) growth process. Type IIa

PROPORTIONS



Sample Image Used

CLARITY CHARACTERISTICS



KEY TO SYMBOLS

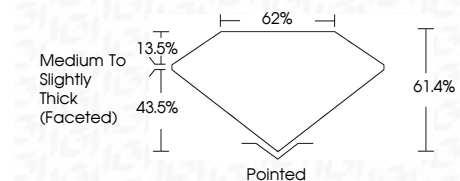
Red symbols indicate internal characteristics.
Green symbols indicate external characteristics.

COLOR

D E F G H I J Faint Very Light Light

CLARITY

FL	IF	VVS ¹⁻²	VS ¹⁻²	SI ¹⁻²	I ¹⁻³
Flawless	Internally Flawless	Very Very Slightly Included	Very Slightly Included	Slightly Included	Included



ADDITIONAL GRADING INFORMATION

Polish **EXCELLENT**

Symmetry **EXCELLENT**

Fluorescence **NONE**

Inscription(s) **LG787633304**

Comments: This Laboratory Grown Diamond was created by Chemical Vapor Deposition (CVD) growth process. Type IIa



IGI



April 2, 2026
IGI Report No LG787633304
PEAR BRILLIANT

16.91 X 10.85 X 6.66 MM

Carat Weight **7.17 CARATS**

Color Grade **E**

Clarity Grade **VVS 2**

Depth **43.5%**

Table **13.5%**

Girdle **62%**

Medium to Slightly Thick (Faceted)

Culet **Pointed**

Polish **EXCELLENT**

Symmetry **EXCELLENT**

Fluorescence **NONE**

Inscription(s) **LG787633304**

Comments: This Laboratory Grown Diamond was created by Chemical Vapor Deposition (CVD) growth process. Type IIa