



April 1, 2026

IGI Report Number **LG787649768**

ROUND BRILLIANT

LABORATORY GROWN DIAMOND

4.86 - 4.87 X 2.98 MM

Carat Weight	0.44 CARAT
Color Grade	D
Clarity Grade	VS 2
Cut Grade	VERY GOOD
Polish	VERY GOOD
Symmetry	VERY GOOD
Fluorescence	NONE
Inscription(s)	IGI LG787649768

Comments: This Laboratory Grown Diamond was created by Chemical Vapor Deposition (CVD) growth process. Type IIa

LABORATORY GROWN DIAMOND REPORT

April 1, 2026
IGI Report Number **LG787649768**
Description **LABORATORY GROWN DIAMOND**
Shape and Cutting Style **ROUND BRILLIANT**
Measurements **4.86 - 4.87 X 2.98 MM**

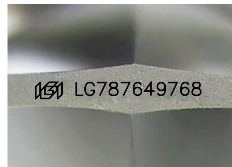
GRADING RESULTS

Carat Weight **0.44 CARAT**
Color Grade **D**
Clarity Grade **VS 2**
Cut Grade **VERY GOOD**

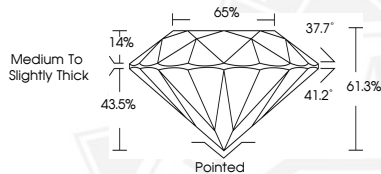
ADDITIONAL GRADING INFORMATION

Polish **VERY GOOD**
Symmetry **VERY GOOD**
Fluorescence **NONE**
Inscription(s) **IGI LG787649768**

Comments: This Laboratory Grown Diamond was created by Chemical Vapor Deposition (CVD) growth process. Type IIa



Sample Image Used



April 1, 2026

IGI Report Number **LG787649768**

ROUND BRILLIANT

LABORATORY GROWN DIAMOND

4.86 - 4.87 X 2.98 MM

Carat Weight	0.44 CARAT
Color Grade	D
Clarity Grade	VS 2
Cut Grade	VERY GOOD
Polish	VERY GOOD
Symmetry	VERY GOOD
Fluorescence	NONE
Inscription(s)	IGI LG787649768

Comments: This Laboratory Grown Diamond was created by Chemical Vapor Deposition (CVD) growth process. Type IIa



THIS DOCUMENT WAS PRODUCED WITH THE FOLLOWING SECURITY MEASURES: SPECIAL DOCUMENT PAPER, INK SCREENS, WATERMARK, BACKGROUND DESIGNS, HOLOGRAM AND OTHER SECURITY FEATURES NOT LISTED AND DO EXCEED DOCUMENT SECURITY INDUSTRY GUIDELINES.