



LABORATORY GROWN DIAMOND REPORT

April 1, 2026
 IGI Report Number **LG787649799**
 Description **LABORATORY GROWN DIAMOND**
 Shape and Cutting Style **ROUND BRILLIANT**
 Measurements **4.71 - 4.74 X 2.97 MM**

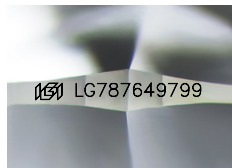
GRADING RESULTS

Carat Weight **0.42 CARAT**
 Color Grade **D**
 Clarity Grade **VS 1**
 Cut Grade **GOOD**

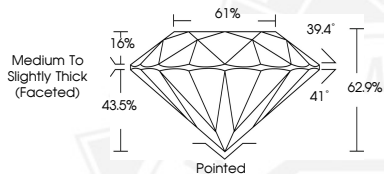
ADDITIONAL GRADING INFORMATION

Polish **VERY GOOD**
 Symmetry **VERY GOOD**
 Fluorescence **NONE**
 Inscription(s) **IGI LG787649799**

Comments: This Laboratory Grown Diamond was created by Chemical Vapor Deposition (CVD) growth process. Type IIa



Sample Image Used



April 1, 2026
 IGI Report Number **LG787649799**
 ROUND BRILLIANT
 LABORATORY GROWN DIAMOND
 4.71 - 4.74 X 2.97 MM
 Carat Weight **0.42 CARAT**
 Color Grade **D**
 Clarity Grade **VS 1**
 Cut Grade **GOOD**
 Polish **VERY GOOD**
 Symmetry **VERY GOOD**
 Fluorescence **NONE**
 Inscription(s) **IGI LG787649799**
 Comments: This Laboratory Grown Diamond was created by Chemical Vapor Deposition (CVD) growth process. Type IIa



April 1, 2026
 IGI Report Number **LG787649799**
 ROUND BRILLIANT
 LABORATORY GROWN DIAMOND
 4.71 - 4.74 X 2.97 MM
 Carat Weight **0.42 CARAT**
 Color Grade **D**
 Clarity Grade **VS 1**
 Cut Grade **GOOD**
 Polish **VERY GOOD**
 Symmetry **VERY GOOD**
 Fluorescence **NONE**
 Inscription(s) **IGI LG787649799**
 Comments: This Laboratory Grown Diamond was created by Chemical Vapor Deposition (CVD) growth process. Type IIa



THIS DOCUMENT WAS PRODUCED WITH THE FOLLOWING SECURITY MEASURES: SPECIAL DOCUMENT PAPER, INK SCREENS, WATERMARK, BACKGROUND DESIGNS, HOLOGRAM AND OTHER SECURITY FEATURES NOT LISTED AND DO EXCEED DOCUMENT SECURITY INDUSTRY GUIDELINES.