



March 31, 2026

**IGI Report Number LG787651877**  
**SQUARE CUSHION MODIFIED  
BRILLIANT**

**LABORATORY GROWN DIAMOND**  
**3.99 X 3.79 X 2.52 MM**

Carat Weight **0.30 CARAT**  
Color Grade **E**  
Clarity Grade **VS 1**  
Polish **VERY GOOD**  
Symmetry **VERY GOOD**  
Fluorescence **NONE**  
Inscription(s) **IGI LG787651877**

Comments: This Laboratory Grown Diamond was created by Chemical Vapor Deposition (CVD) growth process. Type IIa

**LABORATORY GROWN DIAMOND REPORT**

March 31, 2026

IGI Report Number

**LG787651877**

Description

**LABORATORY GROWN DIAMOND**

Shape and Cutting Style

**SQUARE CUSHION MODIFIED BRILLIANT**

Measurements

**3.99 X 3.79 X 2.52 MM**

**GRADING RESULTS**

Carat Weight

**0.30 CARAT**

Color Grade

**E**

Clarity Grade

**VS 1**

**ADDITIONAL GRADING INFORMATION**

Polish

**VERY GOOD**

Symmetry

**VERY GOOD**

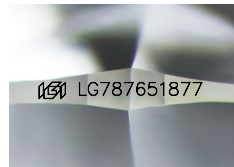
Fluorescence

**NONE**

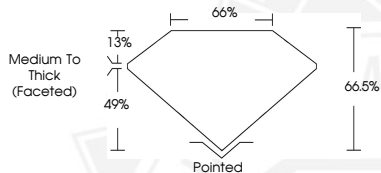
Inscription(s)

**IGI LG787651877**

Comments: This Laboratory Grown Diamond was created by Chemical Vapor Deposition (CVD) growth process. Type IIa



Sample Image Used



March 31, 2026

**IGI Report Number LG787651877**  
**SQUARE CUSHION MODIFIED  
BRILLIANT**

**LABORATORY GROWN DIAMOND**  
**3.99 X 3.79 X 2.52 MM**

Carat Weight **0.30 CARAT**  
Color Grade **E**  
Clarity Grade **VS 1**  
Polish **VERY GOOD**  
Symmetry **VERY GOOD**  
Fluorescence **NONE**  
Inscription(s) **IGI LG787651877**

Comments: This Laboratory Grown Diamond was created by Chemical Vapor Deposition (CVD) growth process. Type IIa



THIS DOCUMENT WAS PRODUCED WITH THE FOLLOWING SECURITY MEASURES: SPECIAL DOCUMENT PAPER, INK SCREENS, WATERMARK, BACKGROUND DESIGNS, HOLOGRAM AND OTHER SECURITY FEATURES NOT LISTED AND DO EXCEED DOCUMENT SECURITY INDUSTRY GUIDELINES.