



ELECTRONIC COPY

LG787658008
Report verification at igi.org



April 6, 2026

IGI Report Number **LG787658008**

Description **LABORATORY GROWN DIAMOND**

Shape and Cutting Style **ROUND BRILLIANT**

Measurements **8.73 - 8.80 X 5.41 MM**

GRADING RESULTS

Carat Weight **2.57 CARATS**

Color Grade **E**

Clarity Grade **VVS 2**

Cut Grade **IDEAL**

April 6, 2026

IGI Report Number **LG787658008**

Description **LABORATORY GROWN DIAMOND**

Shape and Cutting Style **ROUND BRILLIANT**

Measurements **8.73 - 8.80 X 5.41 MM**

GRADING RESULTS

Carat Weight **2.57 CARATS**

Color Grade **E**

Clarity Grade **VVS 2**

Cut Grade **IDEAL**

ADDITIONAL GRADING INFORMATION

Polish **EXCELLENT**

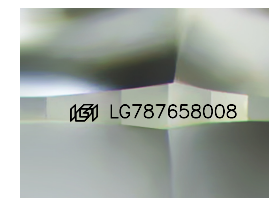
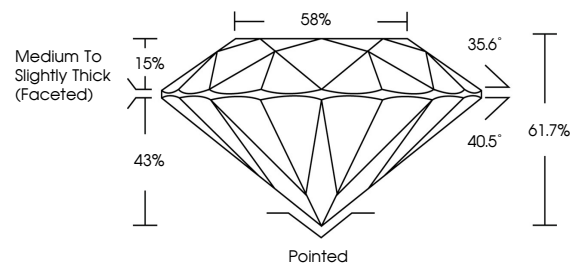
Symmetry **EXCELLENT**

Fluorescence **NONE**

Inscription(s) **IGI LG787658008**

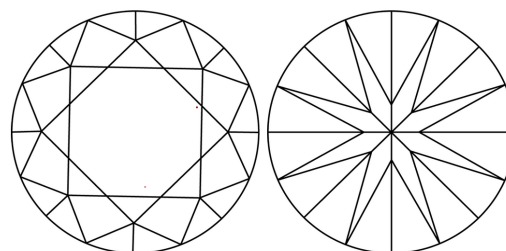
Comments: This Laboratory Grown Diamond was created by Chemical Vapor Deposition (CVD) growth process.
Type IIa

PROPORTIONS



Sample Image Used

CLARITY CHARACTERISTICS



KEY TO SYMBOLS

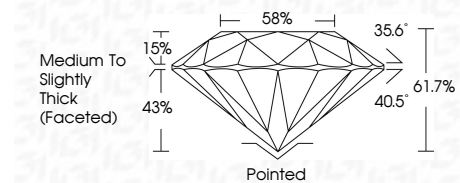
Red symbols indicate internal characteristics.
Green symbols indicate external characteristics.

COLOR

D E F G H I J Faint Very Light Light

CLARITY

FL	IF	VVS ¹⁻²	VS ¹⁻²	SI ¹⁻²	I ¹⁻³
Flawless	Internally Flawless	Very Very Slightly Included	Very Slightly Included	Slightly Included	Included



ADDITIONAL GRADING INFORMATION

Polish **EXCELLENT**

Symmetry **EXCELLENT**

Fluorescence **NONE**

Inscription(s) **IGI LG787658008**

Comments: This Laboratory Grown Diamond was created by Chemical Vapor Deposition (CVD) growth process.
Type IIa



April 6, 2026	IGI Report No LG787658008	2.57 CARATS	E	Pointed	EXCELLENT	EXCELLENT	NONE	IGI LG787658008
ROUND BRILLIANT	8.73 - 8.80 X 5.41 MM	Color Grade	VVS 2	Depth	IDEAL	61.7%	58%	Medium To Slightly Thick (Faceted)
		Clarity Grade	VVS 2	Cut Grade	IDEAL	61.7%	58%	Pointed
		Table	15%	Symmetry	EXCELLENT	EXCELLENT	NONE	EXCELLENT
		Grade	Medium To Slightly Thick (Faceted)	Fluorescence	NONE	NONE	NONE	EXCELLENT
				Inscription(s)	IGI LG787658008			

Comments: This Laboratory Grown Diamond was created by Chemical Vapor Deposition (CVD) growth process.
Type IIa