



ELECTRONIC COPY

LG787659715
Report verification at igi.org



April 6, 2026

IGI Report Number **LG787659715**

Description **LABORATORY GROWN DIAMOND**

Shape and Cutting Style **CUT CORNERED
RECTANGULAR MODIFIED
BRILLIANT**

Measurements **12.04 X 8.31 X 5.65 MM**

GRADING RESULTS

Carat Weight **4.95 CARATS**

Color Grade **E**

Clarity Grade **SI 1**

April 6, 2026

IGI Report Number **LG787659715**

Description **LABORATORY GROWN DIAMOND**

Shape and Cutting Style **CUT CORNERED RECTANGULAR
MODIFIED BRILLIANT**

Measurements **12.04 X 8.31 X 5.65 MM**

GRADING RESULTS

Carat Weight **4.95 CARATS**

Color Grade **E**

Clarity Grade **SI 1**

ADDITIONAL GRADING INFORMATION

Polish **EXCELLENT**

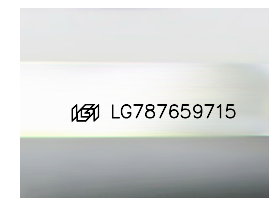
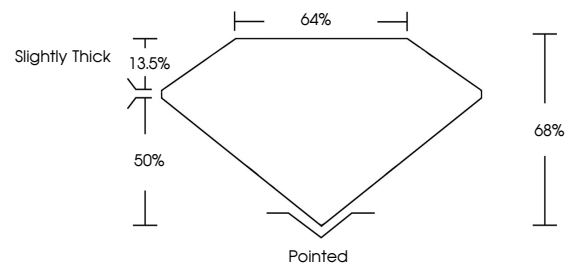
Symmetry **EXCELLENT**

Fluorescence **NONE**

Inscription(s) **IGI LG787659715**

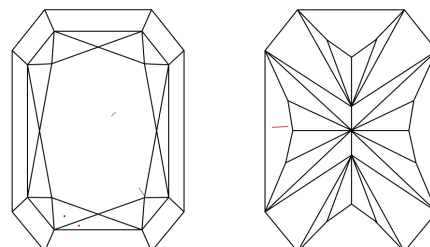
Comments: This Laboratory Grown Diamond was created by Chemical Vapor Deposition (CVD) growth process.
Type IIa

PROPORTIONS



Sample Image Used

CLARITY CHARACTERISTICS



KEY TO SYMBOLS

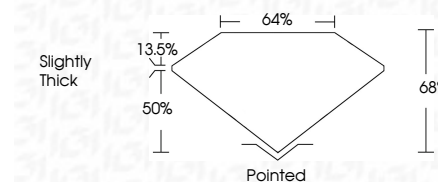
Red symbols indicate internal characteristics.
Green symbols indicate external characteristics.

COLOR

D E F G H I J Faint Very Light Light

CLARITY

FL	IF	VS ¹⁻²	VS ¹⁻²	SI ¹⁻²	I ¹⁻³
Flawless	Internally Flawless	Very Very Slightly Included	Very Slightly Included	Slightly Included	Included



ADDITIONAL GRADING INFORMATION

Polish **EXCELLENT**

Symmetry **EXCELLENT**

Fluorescence **NONE**

Inscription(s) **IGI LG787659715**

Comments: This Laboratory Grown Diamond was created by Chemical Vapor Deposition (CVD) growth process.
Type IIa



IGI



April 6, 2026
IGI Report No LG787659715
CUT CORNERED RECT. MODIFIED BRILLIANT
12.04 X 8.31 X 5.65 MM
4.95 CARATS
E
SI 1
68%
64%
Slightly Thick
Pointed
EXCELLENT
EXCELLENT
NONE
IGI LG787659715
Comments: This Laboratory Grown Diamond was created by Chemical Vapor Deposition (CVD) growth process.
Type IIa