



ELECTRONIC COPY

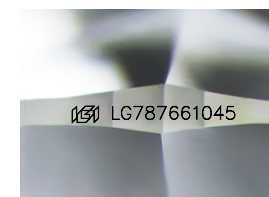
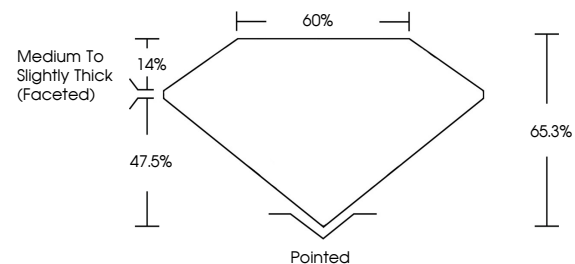
LG787661045
Report verification at igi.org



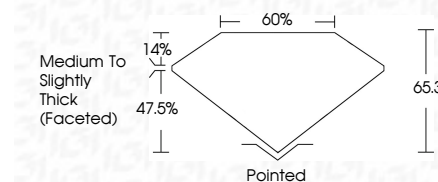
April 8, 2026
IGI Report Number **LG787661045**
Description **LABORATORY GROWN DIAMOND**
Shape and Cutting Style **CUSHION MODIFIED BRILLIANT**
Measurements **11.51 X 8.54 X 5.58 MM**
GRADING RESULTS
Carat Weight **4.32 CARATS**
Color Grade **E**
Clarity Grade **FLAWLESS**

April 8, 2026
IGI Report Number **LG787661045**
Description **LABORATORY GROWN DIAMOND**
Shape and Cutting Style **CUSHION MODIFIED BRILLIANT**
Measurements **11.51 X 8.54 X 5.58 MM**
GRADING RESULTS
Carat Weight **4.32 CARATS**
Color Grade **E**
Clarity Grade **FLAWLESS**

PROPORTIONS



Sample Image Used



ADDITIONAL GRADING INFORMATION

Polish **EXCELLENT**
Symmetry **EXCELLENT**
Fluorescence **NONE**
Inscription(s) **IGI LG787661045**

Comments: This Laboratory Grown Diamond was created by Chemical Vapor Deposition (CVD) growth process. Type IIa

ADDITIONAL GRADING INFORMATION

Polish **EXCELLENT**
Symmetry **EXCELLENT**
Fluorescence **NONE**
Inscription(s) **IGI LG787661045**
Comments: This Laboratory Grown Diamond was created by Chemical Vapor Deposition (CVD) growth process. Type IIa

COLOR

D E F G H I J Faint Very Light Light

CLARITY

| FL | IF | VS ¹⁻² | VS ¹⁻² | SI ¹⁻² | I ¹⁻³ |
|----------|---------------------|-----------------------------|------------------------|-------------------|------------------|
| Flawless | Internally Flawless | Very Very Slightly Included | Very Slightly Included | Slightly Included | Included |



IGI



April 8, 2026
IGI Report No **LG787661045**
CUSHION MODIFIED BRILLIANT
11.51 X 8.54 X 5.58 MM
Carat Weight **4.32 CARATS**
Color Grade **E**
Clarity Grade **FLAWLESS**
Depth **65.3%**
Table **60%**
Girdle **Medium to Slightly Thick (Faceted)**
Culet **Pointed**
Polish **EXCELLENT**
Symmetry **EXCELLENT**
Fluorescence **NONE**
Inscription(s) **IGI LG787661045**
Comments: This Laboratory Grown Diamond was created by Chemical Vapor Deposition (CVD) growth process. Type IIa