



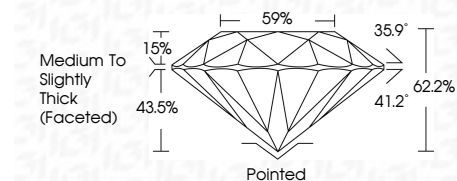
ELECTRONIC COPY

LG787662931 Report verification at igi.org



April 16, 2026 IGI Report Number LG787662931 Description LABORATORY GROWN DIAMOND Shape and Cutting Style ROUND BRILLIANT Measurements 8.97 - 9.03 X 5.60 MM

GRADING RESULTS Carat Weight 2.80 CARATS Color Grade E Clarity Grade VVS 2 Cut Grade IDEAL



ADDITIONAL GRADING INFORMATION Polish EXCELLENT Symmetry EXCELLENT Fluorescence NONE Inscription(s) LG787662931 Comments: This Laboratory Grown Diamond was created by Chemical Vapor Deposition (CVD) growth process. Type IIa



April 16, 2026 IGI Report No LG787662931 ROUND BRILLIANT 8.97 - 9.03 X 5.60 MM 2.80 CARATS E VVS 2 IDEAL 62.2% 59% Medium To Slightly Thick (Faceted) Pointed EXCELLENT EXCELLENT NONE LG787662931

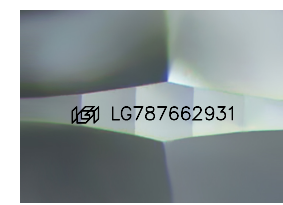
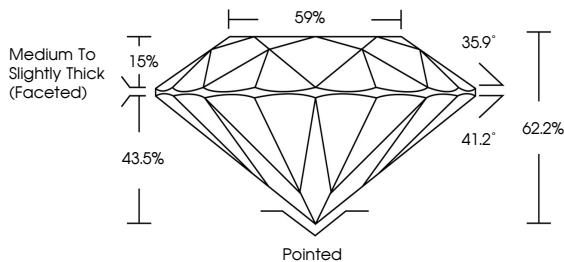
April 16, 2026 IGI Report Number LG787662931 Description LABORATORY GROWN DIAMOND Shape and Cutting Style ROUND BRILLIANT Measurements 8.97 - 9.03 X 5.60 MM

GRADING RESULTS Carat Weight 2.80 CARATS Color Grade E Clarity Grade VVS 2 Cut Grade IDEAL

ADDITIONAL GRADING INFORMATION Polish EXCELLENT Symmetry EXCELLENT Fluorescence NONE Inscription(s) LG787662931

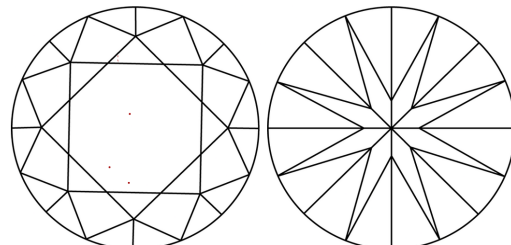
Comments: This Laboratory Grown Diamond was created by Chemical Vapor Deposition (CVD) growth process. Type IIa

PROPORTIONS



Sample Image Used

CLARITY CHARACTERISTICS



KEY TO SYMBOLS Red symbols indicate internal characteristics. Green symbols indicate external characteristics.

COLOR

Table with color scale: D, E, F, G, H, I, J, Faint, Very Light, Light

CLARITY

Table with clarity scale: FL, IF, VVS 1-2, VS 1-2, SI 1-2, I 1-3, Flawless, Internally Flawless, Very Very Slightly Included, Very Slightly Included, Slightly Included, Included

