



**ELECTRONIC COPY**

LG787666290  
Report verification at igi.org



June 3, 2026  
IGI Report Number **LG787666290**  
Description **LABORATORY GROWN DIAMOND**  
Shape and Cutting Style **CUSHION OLD EUROPEAN CUT**  
Measurements **6.58 X 5.26 X 3.60 MM**  
**GRADING RESULTS**  
Carat Weight **1.00 CARAT**  
Color Grade **D**  
Clarity Grade **VVS 1**

June 3, 2026  
IGI Report Number **LG787666290**  
Description **LABORATORY GROWN DIAMOND**  
Shape and Cutting Style **CUSHION OLD EUROPEAN CUT**  
Measurements **6.58 X 5.26 X 3.60 MM**

**GRADING RESULTS**

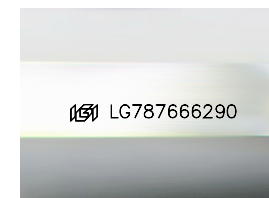
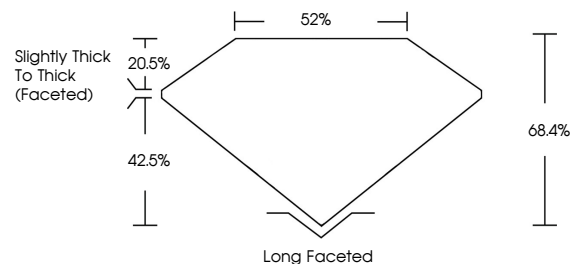
Carat Weight **1.00 CARAT**  
Color Grade **D**  
Clarity Grade **VVS 1**

**ADDITIONAL GRADING INFORMATION**

Polish **EXCELLENT**  
Symmetry **EXCELLENT**  
Fluorescence **NONE**  
Inscription(s) **IGI LG787666290**

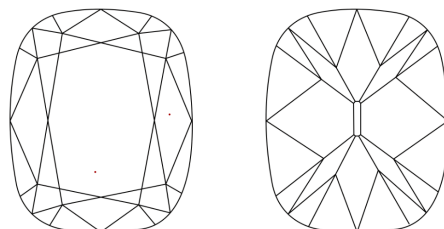
Comments: This Laboratory Grown Diamond was created by Chemical Vapor Deposition (CVD) growth process. Type IIa

**PROPORTIONS**



Sample Image Used

**CLARITY CHARACTERISTICS**



**KEY TO SYMBOLS**

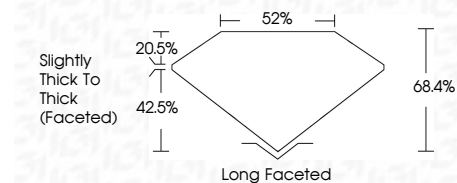
Red symbols indicate internal characteristics.  
Green symbols indicate external characteristics.

**COLOR**

D E F G H I J Faint Very Light Light

**CLARITY**

FL	IF	VVS <sup>1-2</sup>	VS <sup>1-2</sup>	SI <sup>1-2</sup>	I <sup>1-3</sup>
Flawless	Internally Flawless	Very Very Slightly Included	Very Slightly Included	Slightly Included	Included



**ADDITIONAL GRADING INFORMATION**

Polish **EXCELLENT**  
Symmetry **EXCELLENT**  
Fluorescence **NONE**  
Inscription(s) **IGI LG787666290**  
Comments: This Laboratory Grown Diamond was created by Chemical Vapor Deposition (CVD) growth process. Type IIa



June 3, 2026  
IGI Report No **LG787666290**  
**CUSHION OLD EUROPEAN CUT**  
6.58 X 5.26 X 3.60 MM  
Carat Weight **1.00 CARAT**  
Color Grade **D**  
Clarity Grade **VVS 1**  
Depth **68.4%**  
Table **52%**  
Girdle **Slightly Thick To Thick (Faceted)**  
Culet **Long Faceted**  
Polish **EXCELLENT**  
Symmetry **EXCELLENT**  
Fluorescence **NONE**  
Inscription(s) **IGI LG787666290**  
Comments: This Laboratory Grown Diamond was created by Chemical Vapor Deposition (CVD) growth process. Type IIa