



**ELECTRONIC COPY**

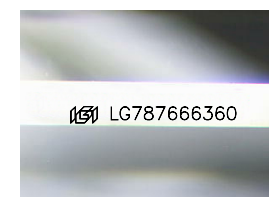
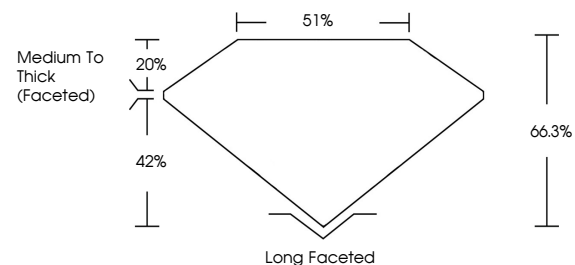
LG787666360  
Report verification at igi.org



May 23, 2026  
IGI Report Number **LG787666360**  
Description **LABORATORY GROWN DIAMOND**  
Shape and Cutting Style **CUSHION OLD EUROPEAN CUT**  
Measurements **11.54 X 8.14 X 5.40 MM**  
**GRADING RESULTS**  
Carat Weight **4.01 CARATS**  
Color Grade **F**  
Clarity Grade **VVS 2**

May 23, 2026  
IGI Report Number **LG787666360**  
Description **LABORATORY GROWN DIAMOND**  
Shape and Cutting Style **CUSHION OLD EUROPEAN CUT**  
Measurements **11.54 X 8.14 X 5.40 MM**

**PROPORTIONS**

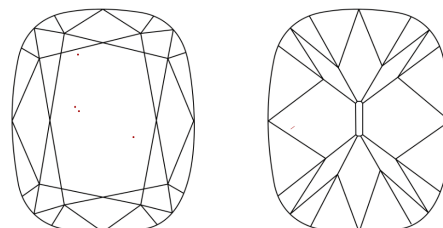


Sample Image Used

**GRADING RESULTS**

Carat Weight **4.01 CARATS**  
Color Grade **F**  
Clarity Grade **VVS 2**

**CLARITY CHARACTERISTICS**



**KEY TO SYMBOLS**

Red symbols indicate internal characteristics.  
Green symbols indicate external characteristics.

**ADDITIONAL GRADING INFORMATION**

Polish **EXCELLENT**  
Symmetry **EXCELLENT**  
Fluorescence **NONE**  
Inscription(s) **IGI LG787666360**

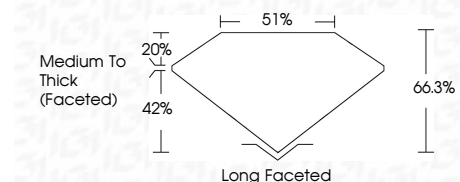
Comments: This Laboratory Grown Diamond was created by Chemical Vapor Deposition (CVD) growth process.  
Type IIa

**COLOR**

D E F G H I J Faint Very Light Light

**CLARITY**

FL	IF	VVS <sup>1-2</sup>	VS <sup>1-2</sup>	SI <sup>1-2</sup>	I <sup>1-3</sup>
Flawless	Internally Flawless	Very Very Slightly Included	Very Slightly Included	Slightly Included	Included



**ADDITIONAL GRADING INFORMATION**

Polish **EXCELLENT**  
Symmetry **EXCELLENT**  
Fluorescence **NONE**  
Inscription(s) **IGI LG787666360**  
Comments: This Laboratory Grown Diamond was created by Chemical Vapor Deposition (CVD) growth process.  
Type IIa



May 23, 2026  
IGI Report No LG787666360  
CUSHION OLD EUROPEAN CUT  
11.54 X 8.14 X 5.40 MM  
4.01 CARATS  
F  
VVS 2  
66.3%  
42%  
51%  
Medium To Thick (Faceted)  
Long Faceted  
EXCELLENT  
EXCELLENT  
NONE  
IGI LG787666360  
Comments: This Laboratory Grown Diamond was created by Chemical Vapor Deposition (CVD) growth process.  
Type IIa