



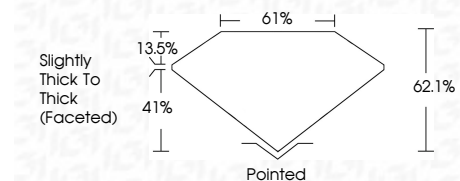
ELECTRONIC COPY

LG787666394
Report verification at igi.org



May 13, 2026
IGI Report Number **LG787666394**
Description **LABORATORY GROWN DIAMOND**
Shape and Cutting Style **OVAL MODIFIED BRILLIANT**
Measurements **9.74 X 6.89 X 4.28 MM**

GRADING RESULTS
Carat Weight **2.08 CARATS**
Color Grade **FANCY VIVID PINK**
Clarity Grade **VS 2**



ADDITIONAL GRADING INFORMATION
Polish **VERY GOOD**
Symmetry **EXCELLENT**
Fluorescence **SLIGHT**
Inscription(s) **IGI LG787666394**
Comments: This Laboratory Grown Diamond was created by Chemical Vapor Deposition (CVD) growth process. Indications of post-growth treatment.



May 13, 2026
IGI Report No **LG787666394**
OVAL MODIFIED BRILLIANT
9.74 X 6.89 X 4.28 MM
2.08 CARATS
FANCY VIVID PINK
VS 2
62.1%
61%
Slightly Thick To Thick (Faceted)
Pointed
VERY GOOD
EXCELLENT
SLIGHT
IGI LG787666394

Comments: This Laboratory Grown Diamond was created by Chemical Vapor Deposition (CVD) growth process. Indications of post-growth treatment.

LABORATORY GROWN DIAMOND REPORT

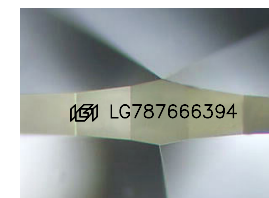
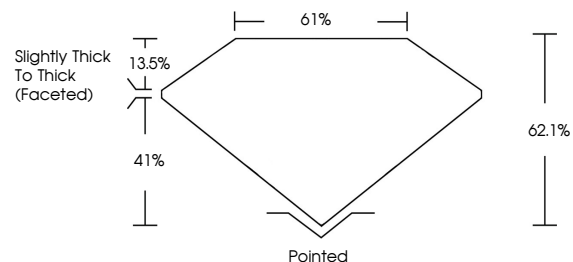
May 13, 2026
IGI Report Number **LG787666394**
Description **LABORATORY GROWN DIAMOND**
Shape and Cutting Style **OVAL MODIFIED BRILLIANT**
Measurements **9.74 X 6.89 X 4.28 MM**

GRADING RESULTS
Carat Weight **2.08 CARATS**
Color Grade **FANCY VIVID PINK**
Clarity Grade **VS 2**

ADDITIONAL GRADING INFORMATION
Polish **VERY GOOD**
Symmetry **EXCELLENT**
Fluorescence **SLIGHT**
Inscription(s) **IGI LG787666394**

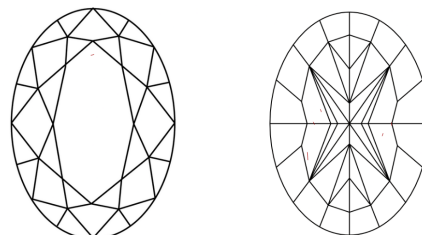
Comments: This Laboratory Grown Diamond was created by Chemical Vapor Deposition (CVD) growth process. Indications of post-growth treatment.

PROPORTIONS



Sample Image Used

CLARITY CHARACTERISTICS



KEY TO SYMBOLS

Red symbols indicate internal characteristics.
Green symbols indicate external characteristics.

COLOR

D E F G H I J Faint Very Light Light

CLARITY

FL	IF	VS ¹⁻²	VS ¹⁻²	SI ¹⁻²	I ¹⁻³
Flawless	Internally Flawless	Very Very Slightly Included	Very Slightly Included	Slightly Included	Included

