



ELECTRONIC COPY

LG78766636
Report verification at igi.org



April 28, 2026

IGI Report Number **LG78766636**

Description **LABORATORY GROWN DIAMOND**

Shape and Cutting Style **CUSHION MIXED CUT**

Measurements **8.76 X 4.43 X 2.94 MM**

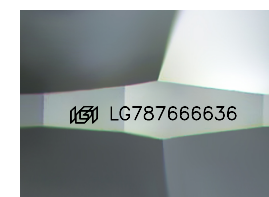
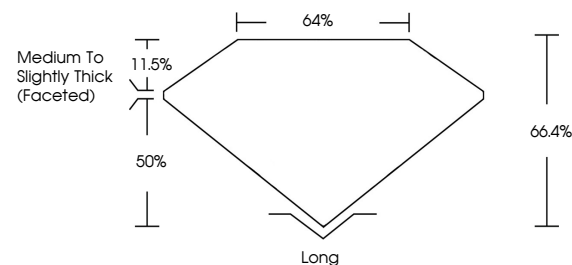
GRADING RESULTS

Carat Weight **1.02 CARAT**

Color Grade **D**

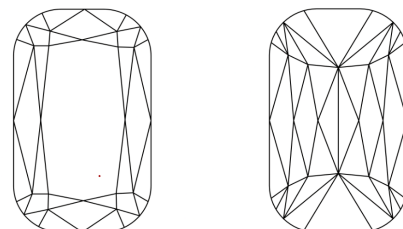
Clarity Grade **VVS 2**

PROPORTIONS



Sample Image Used

CLARITY CHARACTERISTICS



KEY TO SYMBOLS

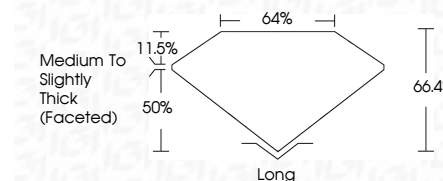
Red symbols indicate internal characteristics.
Green symbols indicate external characteristics.

COLOR

D E F G H I J Faint Very Light Light

CLARITY

FL	IF	VVS ¹⁻²	VS ¹⁻²	SI ¹⁻²	I ¹⁻³
Flawless	Internally Flawless	Very Very Slightly Included	Very Slightly Included	Slightly Included	Included



ADDITIONAL GRADING INFORMATION

Polish **EXCELLENT**

Symmetry **EXCELLENT**

Fluorescence **NONE**

Inscription(s) **IGI LG78766636**

Comments: This Laboratory Grown Diamond was created by Chemical Vapor Deposition (CVD) growth process. Type IIa



IGI



April 28, 2026
IGI Report No LG78766636
CUSHION MIXED CUT
8.76 X 4.43 X 2.94 MM
Carat Weight 1.02 CARAT
Color Grade D
Clarity Grade VVS 2
Table 64.4%
Depth 50.0%
Girdle Medium to Slightly Thick (Faceted)
Culet Long
Polish EXCELLENT
Symmetry EXCELLENT
Fluorescence NONE
Inscription(s) IGI LG78766636

Comments: This Laboratory Grown Diamond was created by Chemical Vapor Deposition (CVD) growth process. Type IIa