

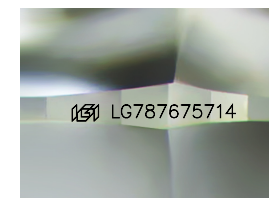


**ELECTRONIC COPY**

LG787675714  
Report verification at igi.org

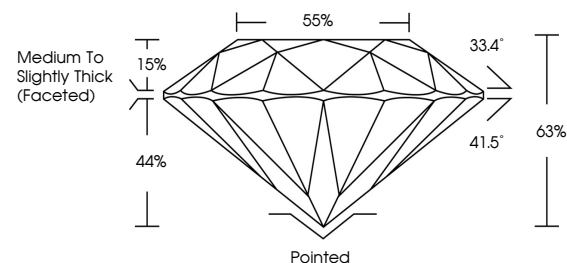


March 31, 2026  
IGI Report Number **LG787675714**  
Description **LABORATORY GROWN DIAMOND**  
Shape and Cutting Style **ROUND BRILLIANT**  
Measurements **6.47 - 6.50 X 4.09 MM**  
**GRADING RESULTS**  
Carat Weight **1.05 CARAT**  
Color Grade **E**  
Clarity Grade **SI 1**  
Cut Grade **EXCELLENT**

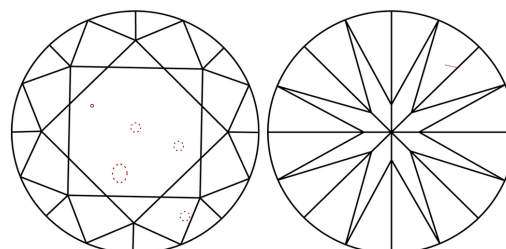


Sample Image Used

**PROPORTIONS**



**CLARITY CHARACTERISTICS**



**KEY TO SYMBOLS**

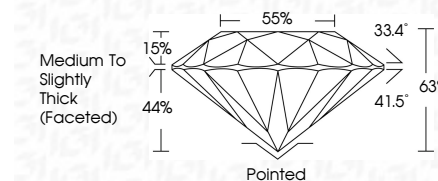
Red symbols indicate internal characteristics.  
Green symbols indicate external characteristics.

**COLOR**

D E F G H I J Faint Very Light Light

**CLARITY**

FL	IF	VS <sup>1-2</sup>	VS <sup>1-2</sup>	SI <sup>1-2</sup>	I <sup>1-3</sup>
Flawless	Internally Flawless	Very Very Slightly Included	Very Slightly Included	Slightly Included	Included



**ADDITIONAL GRADING INFORMATION**

Polish **EXCELLENT**  
Symmetry **EXCELLENT**  
Fluorescence **NONE**  
Inscription(s) **IGI LG787675714**  
Comments: This Laboratory Grown Diamond was created by Chemical Vapor Deposition (CVD) growth process. Type IIa



March 31, 2026  
IGI Report No LG787675714  
ROUND BRILLIANT  
6.47 - 6.50 X 4.09 MM  
1.05 CARAT  
E  
SI 1  
EXCELLENT  
EXCELLENT  
EXCELLENT  
EXCELLENT  
NONE  
IGI LG787675714  
Pointed  
EXCELLENT  
EXCELLENT  
NONE  
IGI LG787675714  
Medium To Slightly Thick (Faceted)  
Culet  
Polish  
Symmetry  
Fluorescence  
Inscription(s)  
Comments: This Laboratory Grown Diamond was created by Chemical Vapor Deposition (CVD) growth process. Type IIa