



ELECTRONIC COPY

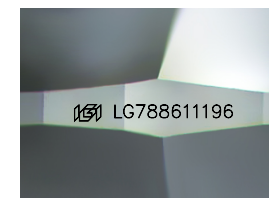
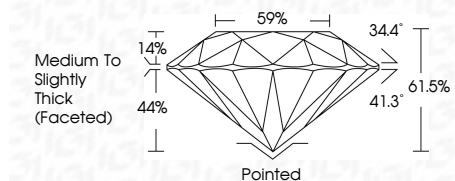
LG788611196
Report verification at igi.org



April 4, 2026
IGI Report Number LG788611196
Description LABORATORY GROWN DIAMOND
Shape and Cutting Style ROUND BRILLIANT
Measurements 6.60 - 6.63 X 4.07 MM

GRADING RESULTS

Carat Weight 1.10 CARAT
Color Grade D
Clarity Grade VVS 2
Cut Grade IDEAL



Sample Image Used

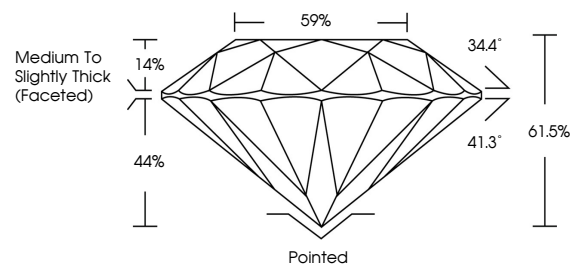
ADDITIONAL GRADING INFORMATION

Polish EXCELLENT
Symmetry EXCELLENT
Fluorescence NONE
Inscription(s) IGI LG788611196
Comments: This Laboratory Grown Diamond was created by Chemical Vapor Deposition (CVD) growth process. Type IIa

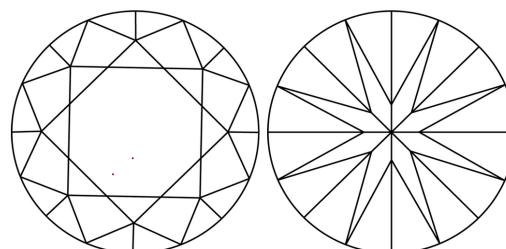


April 4, 2026
IGI Report No LG788611196
ROUND BRILLIANT
1.10 CARAT D
6.60 - 6.63 X 4.07 MM VVS 2 IDEAL
Color Grade D 61.5% 59%
Medium To Slightly Thick (Faceted)
Cut Grade IDEAL
Pointed EXCELLENT EXCELLENT NONE
Symmetry EXCELLENT
Fluorescence NONE
Inscriptions(s) IGI LG788611196
Comments: This Laboratory Grown Diamond was created by Chemical Vapor Deposition (CVD) growth process. Type IIa

PROPORTIONS



CLARITY CHARACTERISTICS



KEY TO SYMBOLS

Red symbols indicate internal characteristics.
Green symbols indicate external characteristics.

COLOR

D E F G H I J Faint Very Light Light

CLARITY

FL IF VVS 1-2 VS 1-2 SI 1-2 I 1-3
Flawless Internally Flawless Very Very Slightly Included Very Slightly Included Slightly Included Included

