



**ELECTRONIC COPY**

LG788612237  
Report verification at igi.org



April 22, 2026

IGI Report Number **LG788612237**

Description **LABORATORY GROWN DIAMOND**

Shape and Cutting Style **ROUND BRILLIANT**

Measurements **9.86 - 9.92 X 5.86 MM**

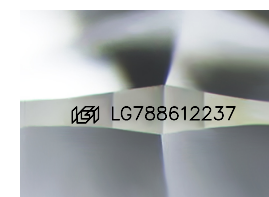
**GRADING RESULTS**

Carat Weight **3.52 CARATS**

Color Grade **E**

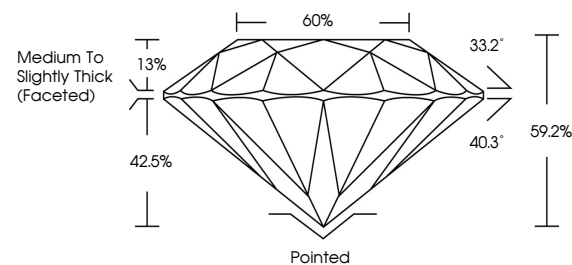
Clarity Grade **VVS 2**

Cut Grade **EXCELLENT**

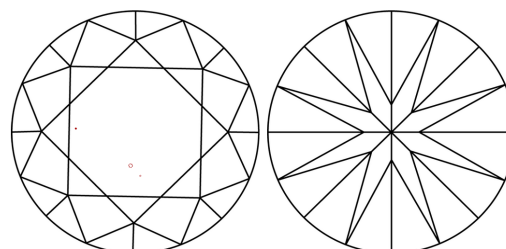


Sample Image Used

**PROPORTIONS**



**CLARITY CHARACTERISTICS**



**KEY TO SYMBOLS**

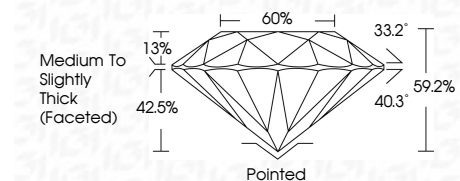
Red symbols indicate internal characteristics.  
Green symbols indicate external characteristics.

**COLOR**

D E F G H I J Faint Very Light Light

**CLARITY**

FL	IF	VVS <sup>1-2</sup>	VS <sup>1-2</sup>	SI <sup>1-2</sup>	I <sup>1-3</sup>
Flawless	Internally Flawless	Very Very Slightly Included	Very Slightly Included	Slightly Included	Included



**ADDITIONAL GRADING INFORMATION**

Polish **EXCELLENT**

Symmetry **EXCELLENT**

Fluorescence **NONE**

Inscription(s) **IGI LG788612237**

Comments: This Laboratory Grown Diamond was created by Chemical Vapor Deposition (CVD) growth process. Type IIa



**IGI**



April 22, 2026  
IGI Report No LG788612237  
ROUND BRILLIANT

3.52 CARATS  
E  
EXCELLENT  
60%  
Medium To Slightly Thick (Faceted)

9.86 - 9.92 X 5.86 MM  
VVS 2  
EXCELLENT  
EXCELLENT  
NONE  
IGI LG788612237

Pointed  
EXCELLENT  
EXCELLENT  
NONE  
IGI LG788612237

Culet  
Polish  
Symmetry  
Fluorescence  
Inscription(s)

Comments: This Laboratory Grown Diamond was created by Chemical Vapor Deposition (CVD) growth process. Type IIa