



ELECTRONIC COPY

LG788619760
Report verification at igi.org



April 11, 2026
IGI Report Number **LG788619760**
Description **LABORATORY GROWN DIAMOND**
Shape and Cutting Style **SQUARE CUSHION MODIFIED BRILLIANT**

Measurements **9.09 X 9.00 X 5.36 MM**

GRADING RESULTS

Carat Weight **4.04 CARATS**
Color Grade **FANCY BLUE**
Clarity Grade **VVS 2**

April 11, 2026
IGI Report Number **LG788619760**
Description **LABORATORY GROWN DIAMOND**
Shape and Cutting Style **SQUARE CUSHION MODIFIED BRILLIANT**
Measurements **9.09 X 9.00 X 5.36 MM**

GRADING RESULTS

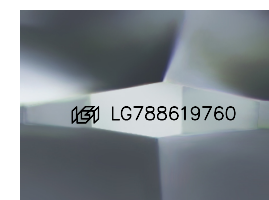
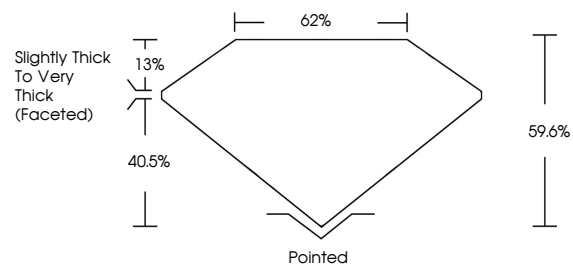
Carat Weight **4.04 CARATS**
Color Grade **FANCY BLUE**
Clarity Grade **VVS 2**

ADDITIONAL GRADING INFORMATION

Polish **EXCELLENT**
Symmetry **EXCELLENT**
Fluorescence **NONE**
Inscription(s) **IGI LG788619760**

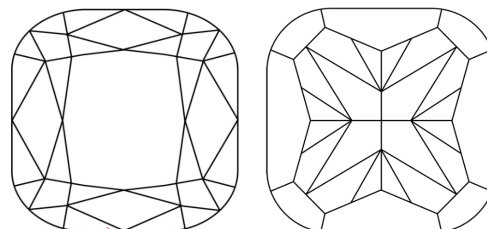
Comments: This Laboratory Grown Diamond was created by High Pressure High Temperature (HPHT) growth process. Indications of post-growth treatment.

PROPORTIONS



Sample Image Used

CLARITY CHARACTERISTICS



KEY TO SYMBOLS

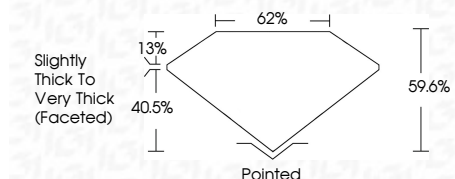
Red symbols indicate internal characteristics.
Green symbols indicate external characteristics.

COLOR

D E F G H I J Faint Very Light Light

CLARITY

FL	IF	VVS ¹⁻²	VS ¹⁻²	SI ¹⁻²	I ¹⁻³
Flawless	Internally Flawless	Very Very Slightly Included	Very Slightly Included	Slightly Included	Included



ADDITIONAL GRADING INFORMATION

Polish **EXCELLENT**
Symmetry **EXCELLENT**
Fluorescence **NONE**
Inscription(s) **IGI LG788619760**

Comments: This Laboratory Grown Diamond was created by High Pressure High Temperature (HPHT) growth process. Indications of post-growth treatment.



IGI



April 11, 2026
IGI Report No **LG788619760**
SQUARE CUSHION MODIFIED BRILLIANT
4.04 CARATS
FANCY BLUE
VVS 2
9.09 X 9.00 X 5.36 MM
Color Grade
Fancy Blue
Clarity Grade
VVS 2
Depth
59.6%
Table
62%
Girdle
Slightly Thick To Very Thick (Faceted)
Culet
Pointed
Polish
EXCELLENT
Symmetry
EXCELLENT
Fluorescence
NONE
Inscription(s)
IGI LG788619760

Comments: This Laboratory Grown Diamond was created by High Pressure High Temperature (HPHT) growth process. Indications of post-growth treatment.