



**ELECTRONIC COPY**

LG788621237  
Report verification at igi.org



April 17, 2026

IGI Report Number **LG788621237**

Description **LABORATORY GROWN DIAMOND**

Shape and Cutting Style **ROUND BRILLIANT**

Measurements **7.77 - 7.79 X 4.73 MM**

**GRADING RESULTS**

Carat Weight **1.75 CARAT**

Color Grade **D**

Clarity Grade **INTERNALLY FLAWLESS**

Cut Grade **IDEAL**

April 17, 2026  
IGI Report Number **LG788621237**  
Description **LABORATORY GROWN DIAMOND**  
Shape and Cutting Style **ROUND BRILLIANT**  
Measurements **7.77 - 7.79 X 4.73 MM**

**GRADING RESULTS**

Carat Weight **1.75 CARAT**

Color Grade **D**

Clarity Grade **INTERNALLY FLAWLESS**

Cut Grade **IDEAL**

**ADDITIONAL GRADING INFORMATION**

Polish **EXCELLENT**

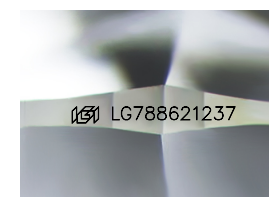
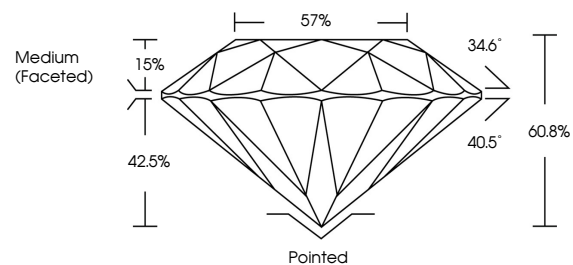
Symmetry **EXCELLENT**

Fluorescence **NONE**

Inscription(s) **LG788621237**

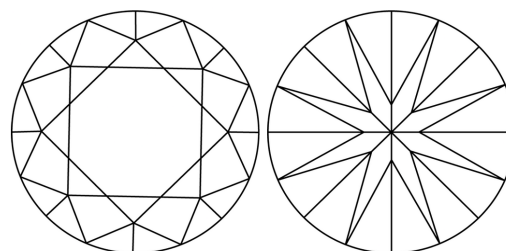
Comments: As Grown - No indication of post-growth treatment.  
This Laboratory Grown Diamond was created by High Pressure High Temperature (HPHT) growth process.  
Type II

**PROPORTIONS**



Sample Image Used

**CLARITY CHARACTERISTICS**



**KEY TO SYMBOLS**

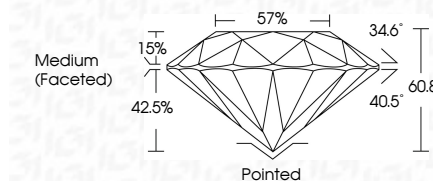
Red symbols indicate internal characteristics.  
Green symbols indicate external characteristics.

**COLOR**

D E F G H I J Faint Very Light Light

**CLARITY**

FL	IF	VS <sup>1-2</sup>	VS <sup>1-2</sup>	SI <sup>1-2</sup>	I <sup>1-3</sup>
Flawless	Internally Flawless	Very Very Slightly Included	Very Slightly Included	Slightly Included	Included



**ADDITIONAL GRADING INFORMATION**

Polish **EXCELLENT**

Symmetry **EXCELLENT**

Fluorescence **NONE**

Inscription(s) **LG788621237**

Comments: As Grown - No indication of post-growth treatment.  
This Laboratory Grown Diamond was created by High Pressure High Temperature (HPHT) growth process.  
Type II



**IGI**



April 17, 2026	IGI Report No LG788621237	ROUND BRILLIANT	1.75 CARAT	D	IF	IDEAL	60.8%	57%	Medium (Faceted)	Pointed	EXCELLENT	EXCELLENT	NONE	LG788621237	
Carat Weight	Color Grade	Clarity Grade	Cut Grade	Depth	Table	Girdle	Culet	Polish	Symmetry	Fluorescence	Inscription(s)	Comments:	As Grown - No indication of post-growth treatment. This Laboratory Grown Diamond was created by High Pressure High Temperature (HPHT) growth process. Type II		