



ELECTRONIC COPY

LG788624415
Report verification at igi.org



May 5, 2026

IGI Report Number **LG788624415**

Description **LABORATORY GROWN DIAMOND**

Shape and Cutting Style **FLAME STEP CUT**

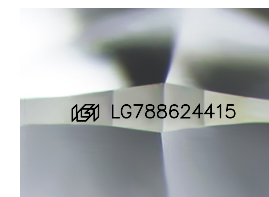
Measurements **9.35 X 4.95 X 3.03 MM**

GRADING RESULTS

Carat Weight **1.10 CARAT**

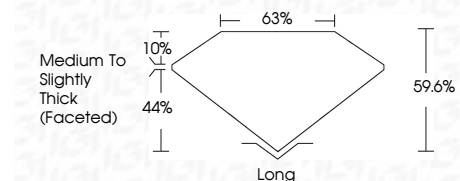
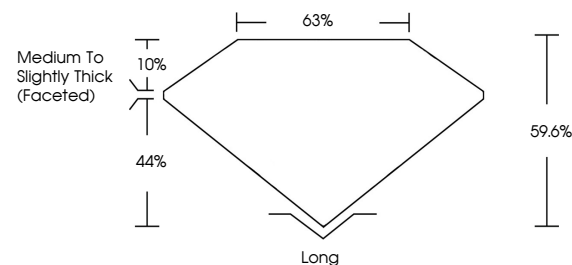
Color Grade **D**

Clarity Grade **VVS 1**

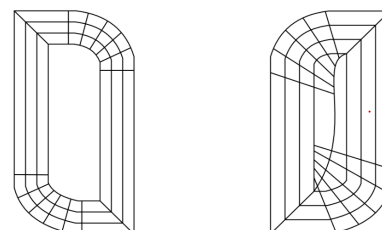


Sample Image Used

PROPORTIONS



CLARITY CHARACTERISTICS



KEY TO SYMBOLS

Red symbols indicate internal characteristics.
Green symbols indicate external characteristics.

COLOR

D E F G H I J Faint Very Light Light

CLARITY

FL	IF	VVS ¹⁻²	VS ¹⁻²	SI ¹⁻²	I ¹⁻³
Flawless	Internally Flawless	Very Very Slightly Included	Very Slightly Included	Slightly Included	Included

ADDITIONAL GRADING INFORMATION

Polish **EXCELLENT**

Symmetry **EXCELLENT**

Fluorescence **NONE**

Inscription(s) **IGI LG788624415**

Comments: As Grown - No indication of post-growth treatment.

This Laboratory Grown Diamond was created by High Pressure High Temperature (HPHT) growth process. Type II



May 5, 2026	IGI Report No LG788624415	1.10 CARAT	D	VVS 1	63%	44%	59.6%	Long	EXCELLENT	EXCELLENT	NONE	IGI LG788624415
FLAME STEP CUT	9.35 X 4.95 X 3.03 MM	Color Grade	Clarity Grade	Table	Girdle	Culet	Polish	Symmetry	Fluorescence	Inscription(s)	Comments: As Grown - No indication of post-growth treatment. This Laboratory Grown Diamond was created by High Pressure High Temperature (HPHT) growth process. Type II	