



ELECTRONIC COPY

LG788630050
Report verification at igi.org



June 1, 2026
IGI Report Number LG788630050
Description LABORATORY GROWN DIAMOND
Shape and Cutting Style ROUND BRILLIANT
Measurements 8.72 - 8.78 X 5.38 MM
GRADING RESULTS
Carat Weight 2.54 CARATS
Color Grade E
Clarity Grade VVS 1
Cut Grade IDEAL

June 1, 2026
IGI Report Number LG788630050
Description LABORATORY GROWN DIAMOND
Shape and Cutting Style ROUND BRILLIANT
Measurements 8.72 - 8.78 X 5.38 MM

GRADING RESULTS

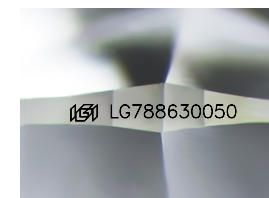
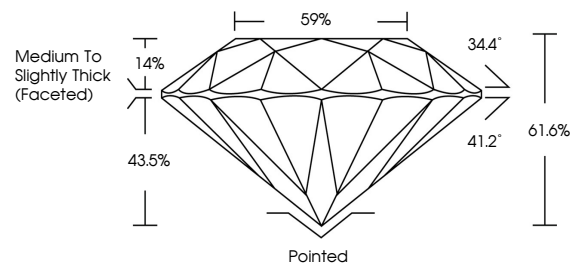
Carat Weight 2.54 CARATS
Color Grade E
Clarity Grade VVS 1
Cut Grade IDEAL

ADDITIONAL GRADING INFORMATION

Polish EXCELLENT
Symmetry EXCELLENT
Fluorescence NONE
Inscription(s) IGI LG788630050

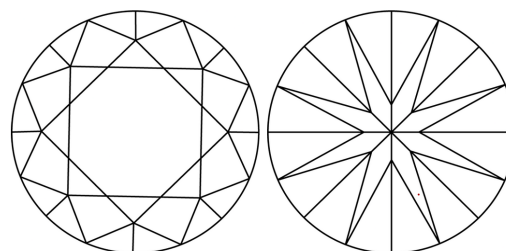
Comments: This Laboratory Grown Diamond was created by Chemical Vapor Deposition (CVD) growth process. Type IIa

PROPORTIONS



Sample Image Used

CLARITY CHARACTERISTICS



KEY TO SYMBOLS

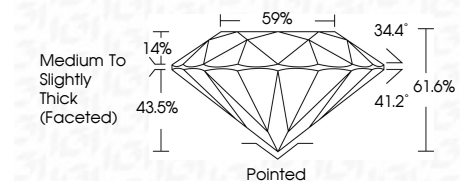
Red symbols indicate internal characteristics.
Green symbols indicate external characteristics.

COLOR

D E F G H I J Faint Very Light Light

CLARITY

FL IF VVS 1-2 VS 1-2 SI 1-2 I 1-3
Flawless Internally Flawless Very Very Slightly Included Very Slightly Included Slightly Included Included



ADDITIONAL GRADING INFORMATION

Polish EXCELLENT
Symmetry EXCELLENT
Fluorescence NONE
Inscription(s) IGI LG788630050
Comments: This Laboratory Grown Diamond was created by Chemical Vapor Deposition (CVD) growth process. Type IIa



IGI



June 1, 2026
IGI Report No LG788630050
ROUND BRILLIANT
8.72 - 8.78 X 5.38 MM
2.54 CARATS E
Color Grade VVS 1 IDEAL
Clarity Grade VVS 1 IDEAL
Depth 61.6%
Table 59%
Girdle Medium To Slightly Thick (Faceted)
Culet Pointed
Polish EXCELLENT
Symmetry EXCELLENT
Fluorescence NONE
Inscription(s) IGI LG788630050
Comments: This Laboratory Grown Diamond was created by Chemical Vapor Deposition (CVD) growth process. Type IIa