



**LABORATORY GROWN DIAMOND REPORT**

March 31, 2026  
 IGI Report Number **LG788632297**  
 Description **LABORATORY GROWN DIAMOND**  
 Shape and Cutting Style **EMERALD CUT**  
 Measurements **6.23 X 4.23 X 2.83 MM**

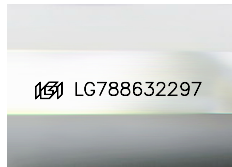
**GRADING RESULTS**

Carat Weight **0.75 CARAT**  
 Color Grade **E**  
 Clarity Grade **VS 1**

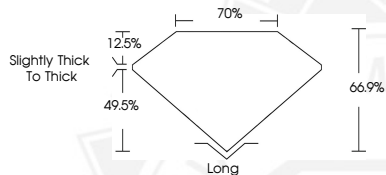
**ADDITIONAL GRADING INFORMATION**

Polish **EXCELLENT**  
 Symmetry **EXCELLENT**  
 Fluorescence **NONE**  
 Inscription(s) **IGI LG788632297**

Comments: This Laboratory Grown Diamond was created by Chemical Vapor Deposition (CVD) growth process. Type IIa



Sample Image Used



March 31, 2026  
 IGI Report Number **LG788632297**  
**EMERALD CUT**  
**LABORATORY GROWN DIAMOND**  
**6.23 X 4.23 X 2.83 MM**  
 Carat Weight **0.75 CARAT**  
 Color Grade **E**  
 Clarity Grade **VS 1**  
 Polish **EXCELLENT**  
 Symmetry **EXCELLENT**  
 Fluorescence **NONE**  
 Inscription(s) **IGI LG788632297**

Comments: This Laboratory Grown Diamond was created by Chemical Vapor Deposition (CVD) growth process. Type IIa



March 31, 2026  
 IGI Report Number **LG788632297**  
**EMERALD CUT**  
**LABORATORY GROWN DIAMOND**  
**6.23 X 4.23 X 2.83 MM**  
 Carat Weight **0.75 CARAT**  
 Color Grade **E**  
 Clarity Grade **VS 1**  
 Polish **EXCELLENT**  
 Symmetry **EXCELLENT**  
 Fluorescence **NONE**  
 Inscription(s) **IGI LG788632297**

Comments: This Laboratory Grown Diamond was created by Chemical Vapor Deposition (CVD) growth process. Type IIa



THIS DOCUMENT WAS PRODUCED WITH THE FOLLOWING SECURITY MEASURES: SPECIAL DOCUMENT PAPER, INK SCREENS, WATERMARK, BACKGROUND DESIGNS, HOLOGRAM AND OTHER SECURITY FEATURES NOT LISTED AND DO EXCEED DOCUMENT SECURITY INDUSTRY GUIDELINES.