



ELECTRONIC COPY

LABORATORY GROWN DIAMOND REPORT

April 3, 2026
IGI Report Number LG788643617
Description LABORATORY GROWN DIAMOND
Shape and Cutting Style CUT CORNERED RECTANGULAR MODIFIED BRILLIANT
Measurements 8.77 X 6.22 X 4.28 MM

GRADING RESULTS

Carat Weight 2.03 CARATS
Color Grade D
Clarity Grade VS 1

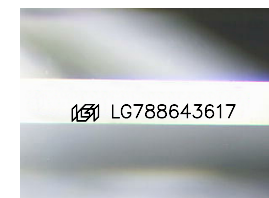
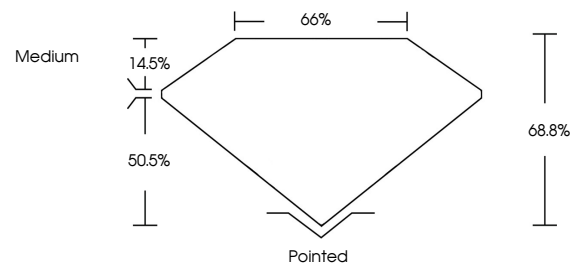
ADDITIONAL GRADING INFORMATION

Polish EXCELLENT
Symmetry EXCELLENT
Fluorescence NONE

Inscription(s) LG788643617

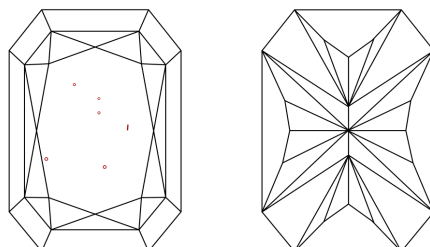
Comments: This Laboratory Grown Diamond was created by Chemical Vapor Deposition (CVD) growth process.
Type IIa

PROPORTIONS



Sample Image Used

CLARITY CHARACTERISTICS



KEY TO SYMBOLS

Red symbols indicate internal characteristics.
Green symbols indicate external characteristics.

COLOR

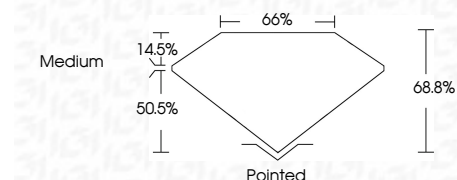
D E F G H I J Faint Very Light Light

CLARITY

FL IF VS¹⁻² VS¹⁻² SI¹⁻² I¹⁻³
Flawless Internally Flawless Very Very Slightly Included Very Slightly Included Slightly Included Included



April 3, 2026
IGI Report Number LG788643617
Description LABORATORY GROWN DIAMOND
Shape and Cutting Style CUT CORNERED RECTANGULAR MODIFIED BRILLIANT
Measurements 8.77 X 6.22 X 4.28 MM
GRADING RESULTS
Carat Weight 2.03 CARATS
Color Grade D
Clarity Grade VS 1



ADDITIONAL GRADING INFORMATION

Polish EXCELLENT
Symmetry EXCELLENT
Fluorescence NONE
Inscription(s) LG788643617
Comments: This Laboratory Grown Diamond was created by Chemical Vapor Deposition (CVD) growth process.
Type IIa



April 3, 2026
IGI Report No LG788643617
CUT CORNERED RECT. MODIFIED BRILLIANT
8.77 X 6.22 X 4.28 MM
2.03 CARATS
D
Color Grade D
Clarity Grade VS 1
Depth 50.5%
Table 14.5%
Medium
Pointed
EXCELLENT
EXCELLENT
NONE
Inscription(s) LG788643617
Comments: This Laboratory Grown Diamond was created by Chemical Vapor Deposition (CVD) growth process.
Type IIa