



**ELECTRONIC COPY**

LG788645174  
Report verification at igi.org



April 23, 2026

IGI Report Number **LG788645174**

Description **LABORATORY GROWN DIAMOND**

Shape and Cutting Style **CUT CORNERED  
RECTANGULAR MODIFIED  
BRILLIANT**

Measurements **16.87 X 12.15 X 8.29 MM**

**GRADING RESULTS**

Carat Weight **16.09 CARATS**

Color Grade **FANCY VIVID RED**

Clarity Grade **VS 1**

April 23, 2026

IGI Report Number **LG788645174**

Description **LABORATORY GROWN DIAMOND**

Shape and Cutting Style **CUT CORNERED RECTANGULAR  
MODIFIED BRILLIANT**

Measurements **16.87 X 12.15 X 8.29 MM**

**GRADING RESULTS**

Carat Weight **16.09 CARATS**

Color Grade **FANCY VIVID RED**

Clarity Grade **VS 1**

**ADDITIONAL GRADING INFORMATION**

Polish **EXCELLENT**

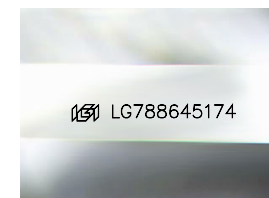
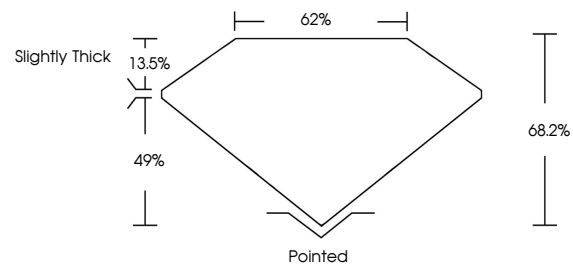
Symmetry **EXCELLENT**

Fluorescence **STRONG**

Inscription(s) **IGI LG788645174**

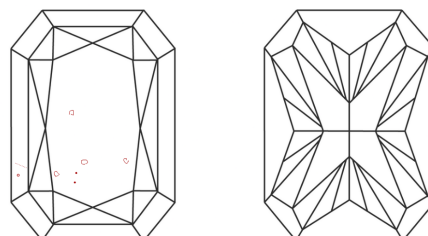
Comments: This Laboratory Grown Diamond was created by Chemical Vapor Deposition (CVD) growth process. Indications of post-growth treatment.

**PROPORTIONS**



Sample Image Used

**CLARITY CHARACTERISTICS**



**KEY TO SYMBOLS**

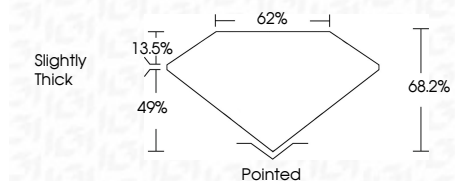
Red symbols indicate internal characteristics.  
Green symbols indicate external characteristics.

**COLOR**

D E F G H I J Faint Very Light Light

**CLARITY**

FL	IF	VS <sup>1-2</sup>	VS <sup>1-2</sup>	SI <sup>1-2</sup>	I <sup>1-3</sup>
Flawless	Internally Flawless	Very Very Slightly Included	Very Slightly Included	Slightly Included	Included



**ADDITIONAL GRADING INFORMATION**

Polish **EXCELLENT**

Symmetry **EXCELLENT**

Fluorescence **STRONG**

Inscription(s) **IGI LG788645174**

Comments: This Laboratory Grown Diamond was created by Chemical Vapor Deposition (CVD) growth process. Indications of post-growth treatment.



April 23, 2026  
IGI Report No LG788645174  
CUT CORNERED RECT. MODIFIED BRILLIANT

16.09 CARATS  
Carat Weight  
FANCY VIVID RED  
Color Grade

VS 1  
Depth 68.2%  
Table 62%  
Girdle Slightly Thick

Pointed  
EXCELLENT  
EXCELLENT  
STRONG  
IGI LG788645174

Comments: This Laboratory Grown Diamond was created by Chemical Vapor Deposition (CVD) growth process. Indications of post-growth treatment.