



ELECTRONIC COPY

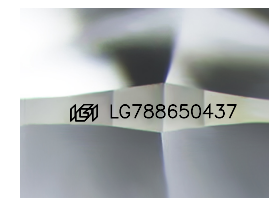
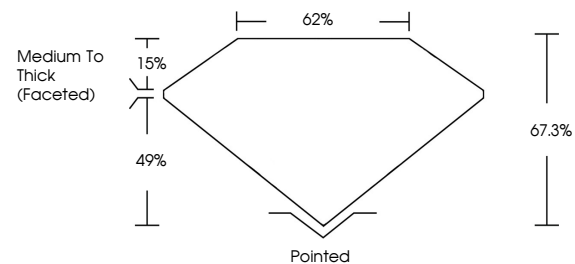
LG788650437
Report verification at igi.org



April 6, 2026
IGI Report Number **LG788650437**
Description **LABORATORY GROWN DIAMOND**
Shape and Cutting Style **CUSHION MODIFIED BRILLIANT**
Measurements **9.90 X 7.65 X 5.15 MM**
GRADING RESULTS
Carat Weight **3.10 CARATS**
Color Grade **F**
Clarity Grade **VVS 2**

April 6, 2026
IGI Report Number **LG788650437**
Description **LABORATORY GROWN DIAMOND**
Shape and Cutting Style **CUSHION MODIFIED BRILLIANT**
Measurements **9.90 X 7.65 X 5.15 MM**

PROPORTIONS

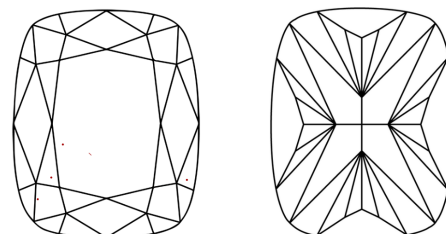


Sample Image Used

GRADING RESULTS

Carat Weight **3.10 CARATS**
Color Grade **F**
Clarity Grade **VVS 2**

CLARITY CHARACTERISTICS



KEY TO SYMBOLS

Red symbols indicate internal characteristics.
Green symbols indicate external characteristics.

ADDITIONAL GRADING INFORMATION

Polish **EXCELLENT**
Symmetry **EXCELLENT**
Fluorescence **NONE**
Inscription(s) **IGI LG788650437**

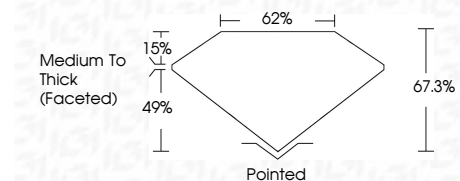
Comments: This Laboratory Grown Diamond was created by Chemical Vapor Deposition (CVD) growth process.
Type IIa

COLOR

D E F G H I J Faint Very Light Light

CLARITY

FL	IF	VVS ¹⁻²	VS ¹⁻²	SI ¹⁻²	I ¹⁻³
Flawless	Internally Flawless	Very Very Slightly Included	Very Slightly Included	Slightly Included	Included



ADDITIONAL GRADING INFORMATION

Polish **EXCELLENT**
Symmetry **EXCELLENT**
Fluorescence **NONE**
Inscription(s) **IGI LG788650437**
Comments: This Laboratory Grown Diamond was created by Chemical Vapor Deposition (CVD) growth process.
Type IIa



April 6, 2026
IGI Report No **LG788650437**
CUSHION MODIFIED BRILLIANT
3.10 CARATS
F
Carat Weight **3.10 CARATS**
Color Grade **F**
Clarity Grade **VVS 2**
Depth **49%**
Table **15%**
Girdle **62%**
Medium To Thick (Faceted)
Culet **Pointed**
Polish **EXCELLENT**
Symmetry **EXCELLENT**
Fluorescence **NONE**
Inscription(s) **IGI LG788650437**

Comments: This Laboratory Grown Diamond was created by Chemical Vapor Deposition (CVD) growth process.
Type IIa