



**ELECTRONIC COPY**

LG788653139  
Report verification at igi.org



April 4, 2026

IGI Report Number **LG788653139**

Description **LABORATORY GROWN DIAMOND**

Shape and Cutting Style **ROUND BRILLIANT**

Measurements **9.23 - 9.26 X 5.75 MM**

**GRADING RESULTS**

Carat Weight **3.03 CARATS**

Color Grade **E**

Clarity Grade **VVS 2**

Cut Grade **IDEAL**

April 4, 2026

IGI Report Number **LG788653139**

Description **LABORATORY GROWN DIAMOND**

Shape and Cutting Style **ROUND BRILLIANT**

Measurements **9.23 - 9.26 X 5.75 MM**

**GRADING RESULTS**

Carat Weight **3.03 CARATS**

Color Grade **E**

Clarity Grade **VVS 2**

Cut Grade **IDEAL**

**ADDITIONAL GRADING INFORMATION**

Polish **EXCELLENT**

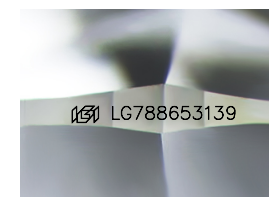
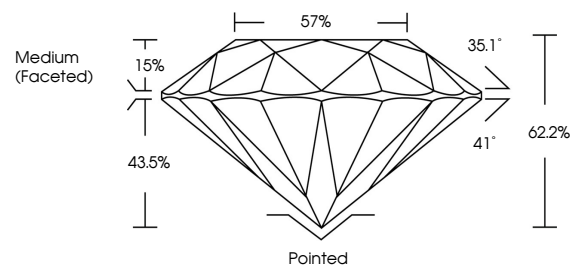
Symmetry **EXCELLENT**

Fluorescence **NONE**

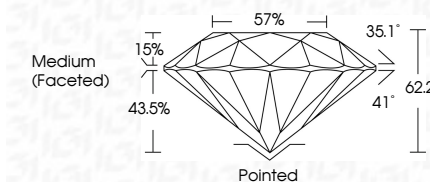
Inscription(s) **LG788653139**

Comments: This Laboratory Grown Diamond was created by Chemical Vapor Deposition (CVD) growth process. Type IIa

**PROPORTIONS**



Sample Image Used



**COLOR**

D E F G H I J Faint Very Light Light

**CLARITY**

FL	IF	VS <sup>1-2</sup>	VS <sup>1-2</sup>	SI <sup>1-2</sup>	I <sup>1-3</sup>
Flawless	Internally Flawless	Very Very Slightly Included	Very Slightly Included	Slightly Included	Included

**ADDITIONAL GRADING INFORMATION**

Polish **EXCELLENT**

Symmetry **EXCELLENT**

Fluorescence **NONE**

Inscription(s) **LG788653139**

Comments: This Laboratory Grown Diamond was created by Chemical Vapor Deposition (CVD) growth process. Type IIa



**IGI**



April 4, 2026	IGI Report No LG788653139	3.03 CARATS	E	Pointed
ROUND BRILLIANT	9.23 - 9.26 X 5.75 MM	VVS 2	IDEAL	EXCELLENT
Carat Weight	Color Grade	Clarity Grade	Depth	Symmetry
3.03 CARATS	E	VVS 2	62.2%	EXCELLENT
		IDEAL	57%	EXCELLENT
			Medium (Faceted)	NONE
				None
				IGI LG788653139

Comments: This Laboratory Grown Diamond was created by Chemical Vapor Deposition (CVD) growth process. Type IIa