



**ELECTRONIC COPY**

LG788658686  
Report verification at igi.org



April 7, 2026  
IGI Report Number **LG788658686**  
Description **LABORATORY GROWN DIAMOND**  
Shape and Cutting Style **CUT CORNERED  
RECTANGULAR MIXED CUT**  
Measurements **7.20 X 5.28 X 3.62 MM**  
**GRADING RESULTS**  
Carat Weight **1.31 CARAT**  
Color Grade **FANCY YELLOW**  
Clarity Grade **VVS 2**

**LABORATORY GROWN DIAMOND REPORT**

April 7, 2026  
IGI Report Number **LG788658686**  
Description **LABORATORY GROWN DIAMOND**  
Shape and Cutting Style **CUT CORNERED RECTANGULAR  
MIXED CUT**  
Measurements **7.20 X 5.28 X 3.62 MM**

**GRADING RESULTS**

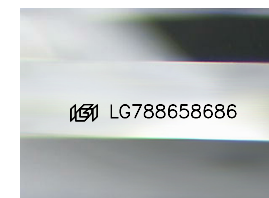
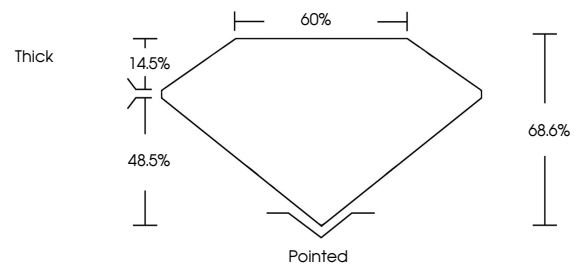
Carat Weight **1.31 CARAT**  
Color Grade **FANCY YELLOW**  
Clarity Grade **VVS 2**

**ADDITIONAL GRADING INFORMATION**

Polish **EXCELLENT**  
Symmetry **EXCELLENT**  
Fluorescence **NONE**  
Inscription(s) **IGI LG788658686**

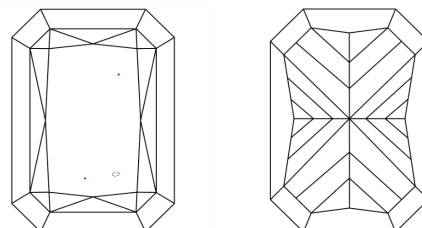
Comments: This Laboratory Grown Diamond was created by Chemical Vapor Deposition (CVD) growth process.

**PROPORTIONS**



Sample Image Used

**CLARITY CHARACTERISTICS**



**KEY TO SYMBOLS**

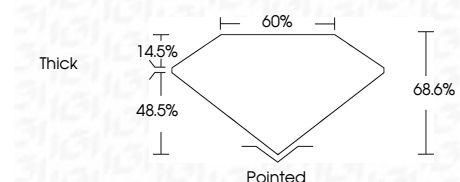
Red symbols indicate internal characteristics.  
Green symbols indicate external characteristics.

**COLOR**

D E F G H I J Faint Very Light Light

**CLARITY**

FL	IF	VVS <sup>1-2</sup>	VS <sup>1-2</sup>	SI <sup>1-2</sup>	I <sup>1-3</sup>
Flawless	Internally Flawless	Very Very Slightly Included	Very Slightly Included	Slightly Included	Included



**ADDITIONAL GRADING INFORMATION**

Polish **EXCELLENT**  
Symmetry **EXCELLENT**  
Fluorescence **NONE**  
Inscription(s) **IGI LG788658686**  
Comments: This Laboratory Grown Diamond was created by Chemical Vapor Deposition (CVD) growth process.



April 7, 2026  
IGI Report No LG788658686  
CUT CORNERED RECT. MIXED CUT  
1.31 CARAT  
FANCY YELLOW  
VVS 2  
68.6%  
60%  
Thick  
Pointed  
EXCELLENT  
EXCELLENT  
NONE  
IGI LG788658686

Comments: This Laboratory Grown Diamond was created by Chemical Vapor Deposition (CVD) growth process.