



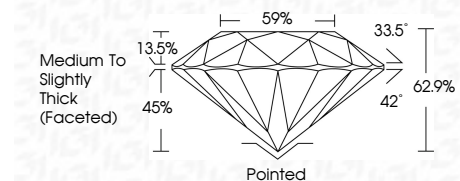
ELECTRONIC COPY

LG788665004
Report verification at igi.org



April 2, 2026
IGI Report Number **LG788665004**
Description **LABORATORY GROWN DIAMOND**
Shape and Cutting Style **ROUND BRILLIANT**
Measurements **7.32 - 7.37 X 4.62 MM**

GRADING RESULTS
Carat Weight **1.53 CARAT**
Color Grade **G**
Clarity Grade **VVS 2**
Cut Grade **VERY GOOD**



ADDITIONAL GRADING INFORMATION
Polish **EXCELLENT**
Symmetry **EXCELLENT**
Fluorescence **NONE**
Inscription(s) **IGI LG788665004**
Comments: This Laboratory Grown Diamond was created by Chemical Vapor Deposition (CVD) growth process. Type IIa



April 2, 2026
IGI Report No LG788665004
ROUND BRILLIANT
7.32 - 7.37 X 4.62 MM
1.53 CARAT
Color Grade **G**
Clarity Grade **VVS 2**
Cut Grade **VERY GOOD**
Depth **62.9%**
Table **59%**
Girdle **Medium To Slightly Thick (Faceted)**
Culet **Pointed**
Polish **EXCELLENT**
Symmetry **EXCELLENT**
Fluorescence **NONE**
Inscription(s) **IGI LG788665004**
Comments: This Laboratory Grown Diamond was created by Chemical Vapor Deposition (CVD) growth process. Type IIa

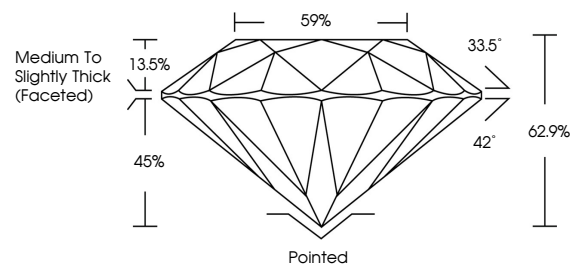
April 2, 2026
IGI Report Number **LG788665004**
Description **LABORATORY GROWN DIAMOND**
Shape and Cutting Style **ROUND BRILLIANT**
Measurements **7.32 - 7.37 X 4.62 MM**

GRADING RESULTS
Carat Weight **1.53 CARAT**
Color Grade **G**
Clarity Grade **VVS 2**
Cut Grade **VERY GOOD**

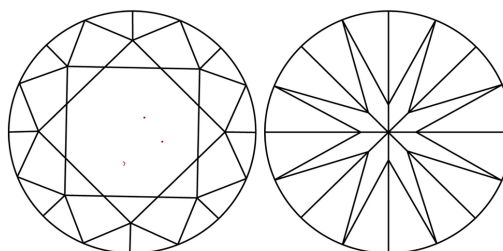
ADDITIONAL GRADING INFORMATION
Polish **EXCELLENT**
Symmetry **EXCELLENT**
Fluorescence **NONE**
Inscription(s) **IGI LG788665004**

Comments: This Laboratory Grown Diamond was created by Chemical Vapor Deposition (CVD) growth process. Type IIa

PROPORTIONS

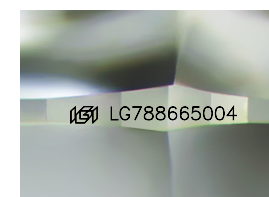


CLARITY CHARACTERISTICS



KEY TO SYMBOLS

Red symbols indicate internal characteristics.
Green symbols indicate external characteristics.



Sample Image Used

COLOR

D E F G H I J Faint Very Light Light

CLARITY

FL	IF	VVS ¹⁻²	VS ¹⁻²	SI ¹⁻²	I ¹⁻³
Flawless	Internally Flawless	Very Very Slightly Included	Very Slightly Included	Slightly Included	Included

