



ELECTRONIC COPY

LG788665695
Report verification at igi.org

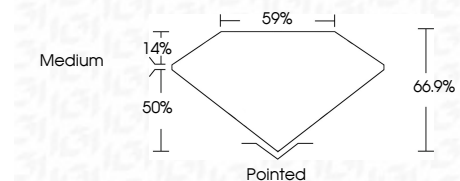


April 8, 2026
IGI Report Number LG788665695
Description LABORATORY GROWN DIAMOND
Shape and Cutting Style CUT CORNERED RECTANGULAR MODIFIED BRILLIANT

Measurements 11.64 X 8.24 X 5.51 MM

GRADING RESULTS

Carat Weight 4.49 CARATS
Color Grade E
Clarity Grade VS 2



ADDITIONAL GRADING INFORMATION

Polish EXCELLENT
Symmetry EXCELLENT
Fluorescence NONE
Inscription(s) IGI LG788665695
Comments: This Laboratory Grown Diamond was created by Chemical Vapor Deposition (CVD) growth process. Type IIa



April 8, 2026
IGI Report No LG788665695
CUT CORNERED RECT. MODIFIED BRILLIANT
4.49 CARATS E
11.64 X 8.24 X 5.51 MM
Color Grade E
Clarity Grade VS 2
Depth 66.9%
Table 50%
Girdle Medium
Culet Pointed
Polish EXCELLENT
Symmetry EXCELLENT
Fluorescence NONE
Inscription(s) IGI LG788665695
Comments: This Laboratory Grown Diamond was created by Chemical Vapor Deposition (CVD) growth process. Type IIa

April 8, 2026
IGI Report Number LG788665695
Description LABORATORY GROWN DIAMOND
Shape and Cutting Style CUT CORNERED RECTANGULAR MODIFIED BRILLIANT
Measurements 11.64 X 8.24 X 5.51 MM

GRADING RESULTS

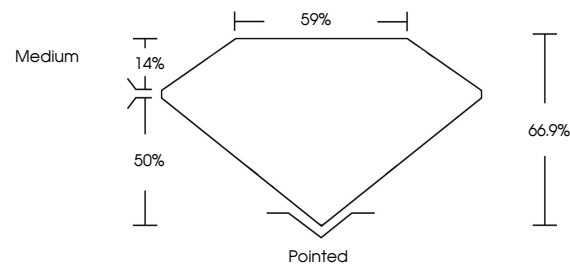
Carat Weight 4.49 CARATS
Color Grade E
Clarity Grade VS 2

ADDITIONAL GRADING INFORMATION

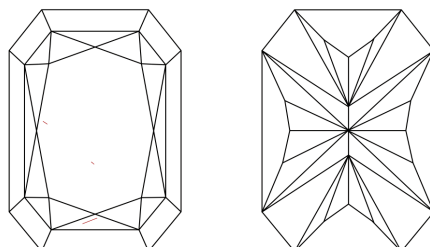
Polish EXCELLENT
Symmetry EXCELLENT
Fluorescence NONE
Inscription(s) IGI LG788665695

Comments: This Laboratory Grown Diamond was created by Chemical Vapor Deposition (CVD) growth process. Type IIa

PROPORTIONS

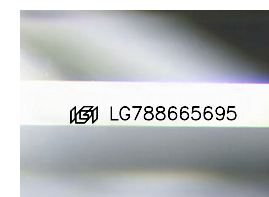


CLARITY CHARACTERISTICS



KEY TO SYMBOLS

Red symbols indicate internal characteristics.
Green symbols indicate external characteristics.



Sample Image Used

COLOR

D E F G H I J Faint Very Light Light

CLARITY

FL IF VS 1-2 VS 1-2 SI 1-2 I 1-3
Flawless Internally Flawless Very Very Slightly Included Very Slightly Included Slightly Included Included

