



**ELECTRONIC COPY**

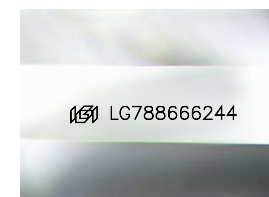
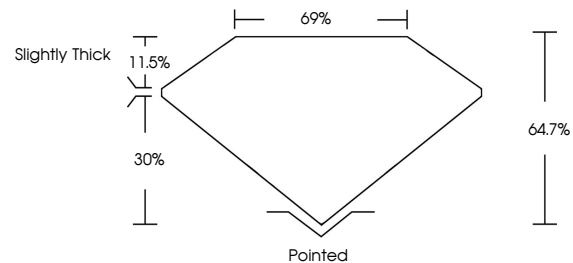
LG788666244  
Report verification at igi.org



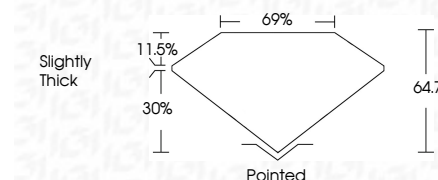
April 10, 2026  
IGI Report Number **LG788666244**  
Description **LABORATORY GROWN DIAMOND**  
Shape and Cutting Style **CUT CORNERED  
RECTANGULAR MODIFIED  
BRILLIANT**  
Measurements **17.20 X 13.19 X 8.53 MM**  
**GRADING RESULTS**  
Carat Weight **19.09 CARATS**  
Color Grade **FANCY VIVID PINK**  
Clarity Grade **VVS 2**

April 10, 2026  
IGI Report Number **LG788666244**  
Description **LABORATORY GROWN DIAMOND**  
Shape and Cutting Style **CUT CORNERED RECTANGULAR  
MODIFIED BRILLIANT**  
Measurements **17.20 X 13.19 X 8.53 MM**  
**GRADING RESULTS**  
Carat Weight **19.09 CARATS**  
Color Grade **FANCY VIVID PINK**  
Clarity Grade **VVS 2**

**PROPORTIONS**



Sample Image Used



**ADDITIONAL GRADING INFORMATION**

Polish **EXCELLENT**  
Symmetry **EXCELLENT**  
Fluorescence **STRONG**  
Inscription(s) **IGI LG788666244**

Comments: This Laboratory Grown Diamond was created by Chemical Vapor Deposition (CVD) growth process.  
Indications of post-growth treatment.

Secondary color: Orange

**COLOR**

D E F G H I J Faint Very Light Light

**CLARITY**

FL	IF	VVS <sup>1-2</sup>	VS <sup>1-2</sup>	SI <sup>1-2</sup>	I <sup>1-3</sup>
Flawless	Internally Flawless	Very Very Slightly Included	Very Slightly Included	Slightly Included	Included

**ADDITIONAL GRADING INFORMATION**

Polish **EXCELLENT**  
Symmetry **EXCELLENT**  
Fluorescence **STRONG**  
Inscription(s) **IGI LG788666244**  
Comments: This Laboratory Grown Diamond was created by Chemical Vapor Deposition (CVD) growth process.  
Indications of post-growth treatment.  
Secondary color: Orange



April 10, 2026  
IGI Report No LG788666244  
CUT CORNERED RECT. MODIFIED BRILLIANT  
19.09 CARATS  
17.20 X 13.19 X 8.53 MM  
FANCY VIVID PINK  
VVS 2  
64.7%  
69%  
Slightly Thick  
Pointed  
EXCELLENT  
EXCELLENT  
STRONG  
IGI LG788666244

Comments: This Laboratory Grown Diamond was created by Chemical Vapor Deposition (CVD) growth process.  
Indications of post-growth treatment.  
Secondary color: Orange