



**INTERNATIONAL  
GEMOLOGICAL  
INSTITUTE**

**ELECTRONIC COPY**



April 3, 2026

**IGI Report Number LG788668954**  
**CUT CORNERED RECTANGULAR  
MODIFIED BRILLIANT**  
**LABORATORY GROWN DIAMOND**  
**6.52 X 4.51 X 2.97 MM**

Carat Weight **0.77 CARAT**  
Color Grade **D**  
Clarity Grade **VS 1**  
Polish **VERY GOOD**  
Symmetry **VERY GOOD**  
Fluorescence **NONE**  
Inscription(s) **IGI LG788668954**

Comments: This Laboratory Grown Diamond was created by Chemical Vapor Deposition (CVD) growth process. Type IIa

**LABORATORY GROWN DIAMOND REPORT**

April 3, 2026  
IGI Report Number **LG788668954**  
Description **LABORATORY GROWN DIAMOND**  
Shape and Cutting Style **CUT CORNERED RECTANGULAR MODIFIED  
BRILLIANT**  
Measurements **6.52 X 4.51 X 2.97 MM**

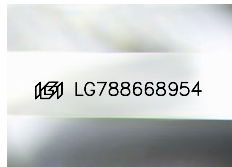
**GRADING RESULTS**

Carat Weight **0.77 CARAT**  
Color Grade **D**  
Clarity Grade **VS 1**

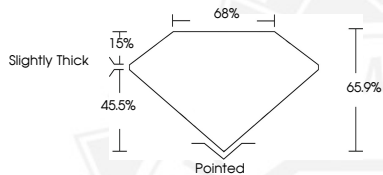
**ADDITIONAL GRADING INFORMATION**

Polish **VERY GOOD**  
Symmetry **VERY GOOD**  
Fluorescence **NONE**  
Inscription(s) **IGI LG788668954**

Comments: This Laboratory Grown Diamond was created by Chemical Vapor Deposition (CVD) growth process. Type IIa



Sample Image Used



April 3, 2026

**IGI Report Number LG788668954**  
**CUT CORNERED RECTANGULAR  
MODIFIED BRILLIANT**  
**LABORATORY GROWN DIAMOND**  
**6.52 X 4.51 X 2.97 MM**

Carat Weight **0.77 CARAT**  
Color Grade **D**  
Clarity Grade **VS 1**  
Polish **VERY GOOD**  
Symmetry **VERY GOOD**  
Fluorescence **NONE**  
Inscription(s) **IGI LG788668954**

Comments: This Laboratory Grown Diamond was created by Chemical Vapor Deposition (CVD) growth process. Type IIa



THIS DOCUMENT WAS PRODUCED WITH THE FOLLOWING SECURITY MEASURES: SPECIAL DOCUMENT PAPER, INK SCREENS, WATERMARK, BACKGROUND DESIGNS, HOLOGRAM AND OTHER SECURITY FEATURES NOT LISTED AND DO EXCEED DOCUMENT SECURITY INDUSTRY GUIDELINES.

For terms & conditions and to verify this report, please visit [www.igi.org](http://www.igi.org)