



**ELECTRONIC COPY**

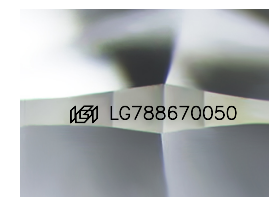
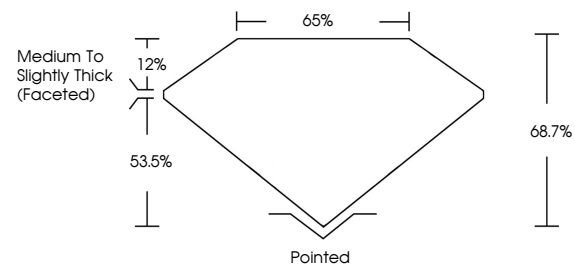
LG788670050  
Report verification at igi.org



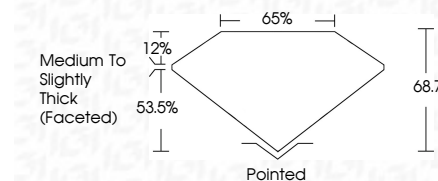
April 6, 2026  
IGI Report Number **LG788670050**  
Description **LABORATORY GROWN DIAMOND**  
Shape and Cutting Style **CUSHION MODIFIED BRILLIANT**  
Measurements **10.44 X 7.26 X 4.99 MM**  
**GRADING RESULTS**  
Carat Weight **3.01 CARATS**  
Color Grade **E**  
Clarity Grade **VVS 2**

April 6, 2026  
IGI Report Number **LG788670050**  
Description **LABORATORY GROWN DIAMOND**  
Shape and Cutting Style **CUSHION MODIFIED BRILLIANT**  
Measurements **10.44 X 7.26 X 4.99 MM**  
**GRADING RESULTS**  
Carat Weight **3.01 CARATS**  
Color Grade **E**  
Clarity Grade **VVS 2**

**PROPORTIONS**



Sample Image Used



**ADDITIONAL GRADING INFORMATION**  
Polish **EXCELLENT**  
Symmetry **EXCELLENT**  
Fluorescence **NONE**  
Inscription(s) **IGI LG788670050**  
Comments: This Laboratory Grown Diamond was created by Chemical Vapor Deposition (CVD) growth process. Type IIa

**COLOR**

D E F G H I J Faint Very Light Light

**CLARITY**

FL	IF	VVS <sup>1-2</sup>	VS <sup>1-2</sup>	SI <sup>1-2</sup>	I <sup>1-3</sup>
Flawless	Internally Flawless	Very Very Slightly Included	Very Slightly Included	Slightly Included	Included

**ADDITIONAL GRADING INFORMATION**

Polish **EXCELLENT**  
Symmetry **EXCELLENT**  
Fluorescence **NONE**  
Inscription(s) **IGI LG788670050**  
Comments: This Laboratory Grown Diamond was created by Chemical Vapor Deposition (CVD) growth process. Type IIa



**IGI**



April 6, 2026  
IGI Report No **LG788670050**  
**CUSHION MODIFIED BRILLIANT**  
**10.44 X 7.26 X 4.99 MM**  
3.01 CARATS  
E  
VVS 2  
68.7%  
65%  
Medium to Slightly Thick (Faceted)  
Pointed  
EXCELLENT  
EXCELLENT  
NONE  
IGI LG788670050  
Comments: This Laboratory Grown Diamond was created by Chemical Vapor Deposition (CVD) growth process. Type IIa