



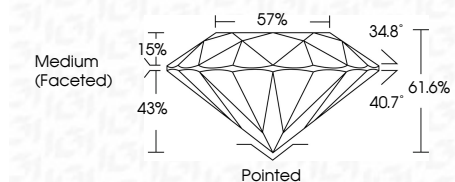
ELECTRONIC COPY

LG788673748
Report verification at igi.org



April 5, 2026
IGI Report Number **LG788673748**
Description **LABORATORY GROWN DIAMOND**
Shape and Cutting Style **ROUND BRILLIANT**
Measurements **8.04 - 8.09 X 4.97 MM**

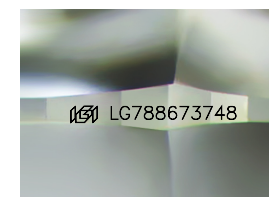
GRADING RESULTS
Carat Weight **1.99 CARAT**
Color Grade **E**
Clarity Grade **VVS 2**
Cut Grade **IDEAL**



ADDITIONAL GRADING INFORMATION
Polish **EXCELLENT**
Symmetry **EXCELLENT**
Fluorescence **NONE**
Inscription(s) **IGI LG788673748**
Comments: This Laboratory Grown Diamond was created by Chemical Vapor Deposition (CVD) growth process. Type IIa

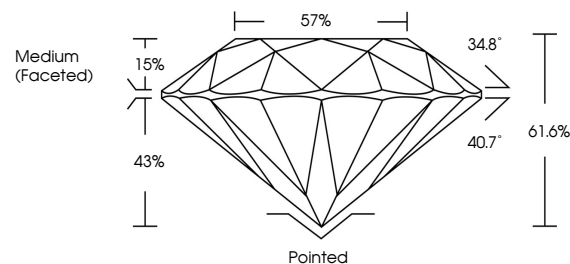


April 5, 2026
IGI Report No LG788673748
ROUND BRILLIANT
8.04 - 8.09 X 4.97 MM
1.99 CARAT
Color Grade **E**
Clarity Grade **VVS 2**
Depth **IDEAL**
Table **15%**
Girdle **61.6%**
Medium (Faceted)
57%
34.8°
40.7°
43%
15%
61.6%
Pointed
EXCELLENT
EXCELLENT
NONE
IGI LG788673748
Comments: This Laboratory Grown Diamond was created by Chemical Vapor Deposition (CVD) growth process. Type IIa



Sample Image Used

PROPORTIONS



COLOR

D E F G H I J Faint Very Light Light

CLARITY

FL	IF	VS ¹⁻²	VS ¹⁻²	SI ¹⁻²	I ¹⁻³
Flawless	Internally Flawless	Very Very Slightly Included	Very Slightly Included	Slightly Included	Included

