



ELECTRONIC COPY

LG788675314
Report verification at igi.org



April 7, 2026

IGI Report Number **LG788675314**

Description **LABORATORY GROWN DIAMOND**

Shape and Cutting Style **ROUND BRILLIANT**

Measurements **7.38 - 7.43 X 4.63 MM**

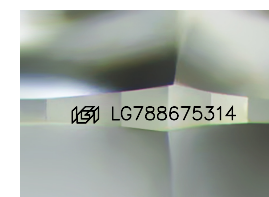
GRADING RESULTS

Carat Weight **1.58 CARAT**

Color Grade **F**

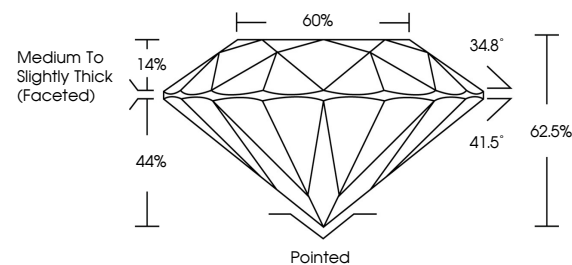
Clarity Grade **VS 1**

Cut Grade **EXCELLENT**

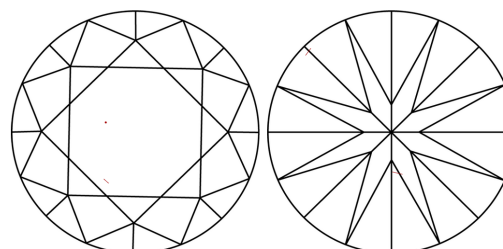


Sample Image Used

PROPORTIONS



CLARITY CHARACTERISTICS



KEY TO SYMBOLS

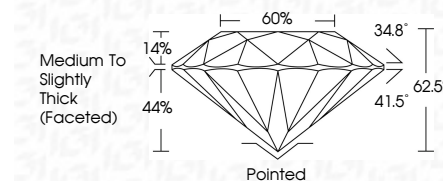
Red symbols indicate internal characteristics.
Green symbols indicate external characteristics.

COLOR

D E F G H I J Faint Very Light Light

CLARITY

| FL | IF | VS ¹⁻² | VS ¹⁻² | SI ¹⁻² | I ¹⁻³ |
|----------|---------------------|-----------------------------|------------------------|-------------------|------------------|
| Flawless | Internally Flawless | Very Very Slightly Included | Very Slightly Included | Slightly Included | Included |



ADDITIONAL GRADING INFORMATION

Polish **EXCELLENT**

Symmetry **EXCELLENT**

Fluorescence **NONE**

Inscription(s) **IGI LG788675314**

Comments: This Laboratory Grown Diamond was created by Chemical Vapor Deposition (CVD) growth process. Type IIa



| | | | | | | | | | | | | |
|-----------------|---------------------------|-------------|-----------|---------------|-----------|-------|------------------------------------|---------|-----------|-----------|--------------|-----------------|
| April 7, 2026 | IGI Report No LG788675314 | 1.58 CARAT | F | VS 1 | EXCELLENT | 60% | Medium To Slightly Thick (Faceted) | Pointed | EXCELLENT | EXCELLENT | NONE | IGI LG788675314 |
| ROUND BRILLIANT | 7.38 - 7.43 X 4.63 MM | Color Grade | Cut Grade | Clarity Grade | Depth | Table | Grade | Culet | Polish | Symmetry | Fluorescence | Inscription(s) |

Comments: This Laboratory Grown Diamond was created by Chemical Vapor Deposition (CVD) growth process. Type IIa