



ELECTRONIC COPY

LG788683490
Report verification at igi.org



April 9, 2026

IGI Report Number **LG788683490**

Description **LABORATORY GROWN DIAMOND**

Shape and Cutting Style **CUSHION MIXED CUT**

Measurements **10.10 X 6.33 X 3.33 MM**

GRADING RESULTS

Carat Weight **2.00 CARATS**

Color Grade **FANCY LIGHT BROWN**

Clarity Grade **VS 1**

April 9, 2026
IGI Report Number **LG788683490**
Description **LABORATORY GROWN DIAMOND**
Shape and Cutting Style **CUSHION MIXED CUT**
Measurements **10.10 X 6.33 X 3.33 MM**

GRADING RESULTS

Carat Weight **2.00 CARATS**

Color Grade **FANCY LIGHT BROWN**

Clarity Grade **VS 1**

ADDITIONAL GRADING INFORMATION

Polish **VERY GOOD**

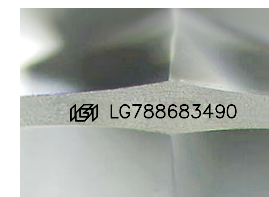
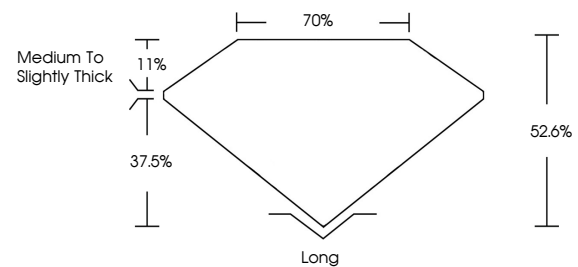
Symmetry **EXCELLENT**

Fluorescence **NONE**

Inscription(s) **LG788683490**

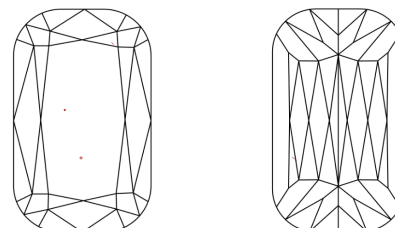
Comments: This Laboratory Grown Diamond was created by Chemical Vapor Deposition (CVD) growth process.
Indications of post-growth treatment.

PROPORTIONS



Sample Image Used

CLARITY CHARACTERISTICS



KEY TO SYMBOLS

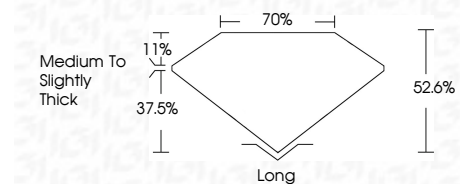
Red symbols indicate internal characteristics.
Green symbols indicate external characteristics.

COLOR

D E F G H I J Faint Very Light Light

CLARITY

FL	IF	VS ¹⁻²	VS ¹⁻²	SI ¹⁻²	I ¹⁻³
Flawless	Internally Flawless	Very Very Slightly Included	Very Slightly Included	Slightly Included	Included



ADDITIONAL GRADING INFORMATION

Polish **VERY GOOD**

Symmetry **EXCELLENT**

Fluorescence **NONE**

Inscription(s) **LG788683490**

Comments: This Laboratory Grown Diamond was created by Chemical Vapor Deposition (CVD) growth process.
Indications of post-growth treatment.



IGI



April 9, 2026
IGI Report No **LG788683490**
CUSHION MIXED CUT
2.00 CARATS
Carat Weight **FANCY LIGHT BROWN**
Color Grade **VS 1**
Depth **62.6%**
Table **70%**
Girdle **Medium to Slightly Thick**
Culet **Long**
Polish **VERY GOOD**
Symmetry **EXCELLENT**
Fluorescence **NONE**
Inscription(s) **LG788683490**
Comments: This Laboratory Grown Diamond was created by Chemical Vapor Deposition (CVD) growth process.
Indications of post-growth treatment.